



## Verification Report

No. NGBEC1801560001

Date: 03 May 2018

Page 1 of 46

Sample Name : Facial Sauna  
SGS Job No. : NP18-001166 - NB  
Tested Basic Model No. : MWFS518-3  
Tested Extended Model No. : MWFS511, MWFS512, MWFS516, MWFS518, MWFS518-1, MWFS518-2, MWFS519-A, MWFS519-B, MWFS519-C,  
Date of Sample Received : 16 Apr 2018  
Verification Period : 16 Apr 2018 - 03 May 2018  
Verification Requested : With reference to RoHS Directive (EU) 2015/863 amending 2011/65/EU.  
Verification Method : Please refer to next page(s).  
Verification Result : Please refer to next page(s).  
Verification Conclusion : Based on the verification results of the submitted samples, the results of Lead, Mercury, Cadmium, Hexavalent chromium, Polybrominated biphenyls (PBBs), Polybrominated diphenyl ethers (PBDEs) do not exceed the limits as set by RoHS Directive (EU) 2015/863 amending Annex II to Directive 2011/65/EU.  
Note : The test results are related only to the tested items. The report shall not be reproduced except in full without the written approval of the testing laboratory.

Signed for and on behalf of  
SGS-CSTC Standards Technical Services Co., Ltd. Ningbo Branch

Iris Xiao  
Approved Signatory



Unless otherwise agreed in writing, this document is issued by the Company subject to its General Conditions of Service printed overleaf, available on request or accessible at <http://www.sgs.com/en/Terms-and-Conditions.aspx> and, for electronic format documents, subject to Terms and Conditions for Electronic Documents at <http://www.sgs.com/en/Terms-and-Conditions/Terms-e-Documents.aspx>. Attention is drawn to the limitation of liability, indemnification and jurisdiction issues defined therein. Any holder of this document is advised that information contained hereon reflects the Company's findings at the time of its intervention only and within the limits of Client's instructions, if any. The Company's sole responsibility is to its Client and this document does not exonerate parties to a transaction from exercising all their rights and obligations under the transaction documents. This document cannot be reproduced except in full, without prior written approval of the Company. Any unauthorized alteration, forgery or falsification of the content or appearance of this document is unlawful and offenders may be prosecuted to the fullest extent of the law. Unless otherwise stated the results shown in this test report refer only to the sample(s) tested.

Attention: To check the authenticity of testing / inspection report & certificate, please contact us at telephone: (86-755) 8307 1443, or email: [CN.Doccheck@sgs.com](mailto:CN.Doccheck@sgs.com)

SGS-CSTC Standards Technical Services Co., Ltd.  
Ningbo Branch Chemical Laboratory

15F West of Building 4, Lingyun Industry Park, No. 1177 Lingyun Road, Ningbo National Hi-Tech Zone, Ningbo, Zhejiang, China 315040 t E&E (86-574)89070249  
中国·浙江·宁波市国家高新区凌云路1177号凌云产业园4号楼西1-5层 邮编: 315040 t HL (86-574)89070271 t ML (86-574)89070242 e [sgs.china@sgs.com](mailto:sgs.china@sgs.com)

[www.sgs.com](http://www.sgs.com)

## Verification Report

No. NGBEC1801560001

Date: 03 May 2018

Page 2 of 46

### Verification Method :

1. With reference to IEC 62321-2:2013, review was performed for the samples disjointed from the submitted articles.
2. With reference to IEC 62321-1:2013, tests were performed for the samples indicated by the photos in this report
  - (1) With reference to IEC 62321-3-1:2013, screening by EDXRF spectroscopy
  - (2) Wet chemical test method
    - a. With reference to IEC 62321-5:2013, determination of Cadmium by ICP-OES
    - b. With reference to IEC 62321-5:2013, determination of Lead by ICP-OES
    - c. With reference to IEC 62321-4:2013+A1:2017, determination of Mercury by ICP-OES
    - d. With reference to IEC 62321-7-1:2015, IEC 62321-7-2:2017 & ISO 17075-1:2017, determination of Hexavalent chromium by Colorimetric method using UV-Vis.
    - e. With reference to IEC 62321-6:2015 , determination of PBBs and PBDEs by GC-MS



Unless otherwise agreed in writing, this document is issued by the Company subject to its General Conditions of Service printed overleaf, available on request or accessible at <http://www.sgs.com/en/Terms-and-Conditions.aspx> and, for electronic format documents, subject to Terms and Conditions for Electronic Documents at <http://www.sgs.com/en/Terms-and-Conditions/Terms-e-Documents.aspx>. Attention is drawn to the limitation of liability, indemnification and jurisdiction issues defined therein. Any holder of this document is advised that information contained hereon reflects the Company's findings at the time of its intervention only and within the limits of Client's instructions, if any. The Company's sole responsibility is to its Client and this document does not exonerate parties to a transaction from exercising all their rights and obligations under the transaction documents. This document cannot be reproduced except in full, without prior written approval of the Company. Any unauthorized alteration, forgery or falsification of the content or appearance of this document is unlawful and offenders may be prosecuted to the fullest extent of the law. Unless otherwise stated the results shown in this test report refer only to the sample(s) tested.

Attention: To check the authenticity of testing / inspection report & certificate, please contact us at telephone: (86-755) 8307 1443, or email: [CN.Doccheck@sgs.com](mailto:CN.Doccheck@sgs.com)

SGS-CSTC Technical Services Co., Ltd.  
Ningbo Branch Chemical Laboratory

15F West of Building 4, Lingyun Industry Park, No. 1177 Lingyun Road, Ningbo National Hi-Tech Zone, Ningbo, Zhejiang, China 315040 t E&E (86-574)89070249  
中国·浙江·宁波市国家高新区凌云路1177号凌云产业园4号楼西1-5层 邮编: 315040 t HL (86-574)89070271 t ML (86-574)89070242 e [sgs.china@sgs.com](mailto:sgs.china@sgs.com)

[www.sgs.com](http://www.sgs.com)

# Verification Report

No. NGBEC1801560001

Date: 03 May 2018

Page 3 of 46

In accordance with the result of material risk assessment, the following disjointed parts in the submitted sample have been verified.

Part No.	Part Description	BOM No.	Restricted Substances	Results of EDXRF (1)	Result of Wet Chemical Testing(2) (mg/kg)	Conclusion on EU RoHS	Sample Submitted / Resubmitted Date
1	MWFS518-3-Green plastic lump		Pb Cd Hg Cr(VI)▼ PBBs PBDEs	BL BL BL BL BL BL	--- --- --- --- --- ---	Comply Comply Comply Comply Comply Comply	16 Apr 2018
2	MWFS518-3-Silvery metal pin(plug)		Pb Cd Hg Cr(VI)▼ PBBs PBDEs	OL BL BL BL --- ---	32747▲ --- --- --- --- ---	Comply Comply Comply Comply --- ---	16 Apr 2018
3	MWFS518-3-White plastic bracket(plug)		Pb Cd Hg Cr(VI)▼ PBBs PBDEs	BL BL BL BL IN IN	--- --- --- --- ND ND	Comply Comply Comply Comply Comply Comply	16 Apr 2018
4	MWFS518-3-White plastic shell(plug)		Pb Cd Hg Cr(VI)▼ PBBs PBDEs	BL BL BL BL BL BL	--- --- --- --- --- ---	Comply Comply Comply Comply Comply Comply	16 Apr 2018



Unless otherwise agreed in writing, this document is issued by the Company subject to its General Conditions of Service printed overleaf, available on request or accessible at <http://www.sgs.com/en/Terms-and-Conditions.aspx> and, for electronic format documents, subject to Terms and Conditions for Electronic Documents at <http://www.sgs.com/en/Terms-and-Conditions/Terms-e-Documents.aspx>. Attention is drawn to the limitation of liability, indemnification and jurisdiction issues defined therein. Any holder of this document is advised that information contained hereon reflects the Company's findings at the time of its intervention only and within the limits of Client's instructions, if any. The Company's sole responsibility is to its Client and this document does not exonerate parties to a transaction from exercising all their rights and obligations under the transaction documents. This document cannot be reproduced except in full, without prior written approval of the Company. Any unauthorized alteration, forgery or falsification of the content or appearance of this document is unlawful and offenders may be prosecuted to the fullest extent of the law. Unless otherwise stated the results shown in this test report refer only to the sample(s) tested.

Attention: To check the authenticity of testing / inspection report & certificate, please contact us at telephone: (86-755) 8307 1443, or email: [CN.Doccheck@sgs.com](mailto:CN.Doccheck@sgs.com)

SGS-CSTC (Shanghai) Technical Services Co., Ltd.  
Ningbo Branch Chemical Laboratory

15/F West of Building 4, Lingyun Industry Park, No. 1177 Lingyun Road, Ningbo National Hi-Tech Zone, Ningbo, Zhejiang, China 315040  
中国·浙江·宁波市国家高新区凌云路1177号凌云产业园4号楼西1-5层

t E&E (86-574)89070249  
t HL (86-574)89070271 t ML (86-574)89070242 e [sgs.china@sgs.com](mailto:sgs.china@sgs.com)

Part No.	Part Description	BOM No.	Restricted Substances	Results of EDXRF (1)	Result of Wet Chemical Testing(2) (mg/kg)	Conclusion on EU RoHS	Sample Submitted / Resubmitted Date
5	MWFS518-3-White plastic sheath(plug)		Pb	BL	---	Comply	16 Apr 2018
			Cd	BL	---	Comply	
			Hg	BL	---	Comply	
			Cr(VI)▼	BL	---	Comply	
			PBBs	BL	---	Comply	
			PBDEs	BL	---	Comply	
6	MWFS518-3-Brown plastic jacket(plug)		Pb	BL	---	Comply	16 Apr 2018
			Cd	BL	---	Comply	
			Hg	BL	---	Comply	
			Cr(VI)▼	BL	---	Comply	
			PBBs	BL	---	Comply	
			PBDEs	BL	---	Comply	
7	MWFS518-3-Blue plastic jacket(plug)		Pb	BL	---	Comply	16 Apr 2018
			Cd	BL	---	Comply	
			Hg	BL	---	Comply	
			Cr(VI)▼	BL	---	Comply	
			PBBs	BL	---	Comply	
			PBDEs	BL	---	Comply	
8	MWFS518-3-Transparent rubber lump		Pb	BL	---	Comply	16 Apr 2018
			Cd	BL	---	Comply	
			Hg	BL	---	Comply	
			Cr(VI)▼	BL	---	Comply	
			PBBs	BL	---	Comply	
			PBDEs	BL	---	Comply	



Unless otherwise agreed in writing, this document is issued by the Company subject to its General Conditions of Service printed overleaf, available on request or accessible at <http://www.sgs.com/en/Terms-and-Conditions.aspx> and, for electronic format documents, subject to Terms and Conditions for Electronic Documents at <http://www.sgs.com/en/Terms-and-Conditions/Terms-e-Documents.aspx>. Attention is drawn to the limitation of liability, indemnification and jurisdiction issues defined therein. Any holder of this document is advised that information contained hereon reflects the Company's findings at the time of its intervention only and within the limits of Client's instructions, if any. The Company's sole responsibility is to its Client and this document does not exonerate parties to a transaction from exercising all their rights and obligations under the transaction documents. This document cannot be reproduced except in full, without prior written approval of the Company. Any unauthorized alteration, forgery or falsification of the content or appearance of this document is unlawful and offenders may be prosecuted to the fullest extent of the law. Unless otherwise stated the results shown in this test report refer only to the sample(s) tested.

**Attention: To check the authenticity of testing / inspection report & certificate, please contact us at telephone: (86-755) 8307 1443, or email: [CN.Doccheck@sgs.com](mailto:CN.Doccheck@sgs.com)**

SGS-CSTC (Shanghai) Technical Services Co., Ltd.  
Ningbo Branch Chemical Laboratory

15F West of Building 4, Lingyun Industry Park, No. 1177 Lingyun Road, Ningbo National Hi-Tech Zone, Ningbo, Zhejiang, China 315040 t E&E (86-574)89070249  
中国·浙江·宁波市国家高新区凌云路1177号凌云产业园4号楼西1-5层 邮编: 315040 t HL (86-574)89070271 t ML (86-574)89070242 e [sgs.china@sgs.com](mailto:sgs.china@sgs.com)

[www.sgs.com](http://www.sgs.com)

Part No.	Part Description	BOM No.	Restricted Substances	Results of EDXRF (1)	Result of Wet Chemical Testing(2) (mg/kg)	Conclusion on EU RoHS	Sample Submitted / Resubmitted Date
9	MWFS518-3-Silvery metal screw		Pb Cd Hg Cr(VI)▼ PBBs PBDEs	BL BL BL BL --- ---	--- --- --- --- --- ---	Comply Comply Comply Comply --- ---	16 Apr 2018
10	MWFS518-3-Green plastic shell		Pb Cd Hg Cr(VI)▼ PBBs PBDEs	BL BL BL BL BL BL	--- --- --- --- --- ---	Comply Comply Comply Comply Comply Comply	16 Apr 2018
11	MWFS518-3-Black plastic shell		Pb Cd Hg Cr(VI)▼ PBBs PBDEs	BL BL BL BL IN IN	--- --- --- --- ND ND	Comply Comply Comply Comply Comply Comply	16 Apr 2018
12	MWFS518-3-Copper-colored metal piece		Pb Cd Hg Cr(VI)▼ PBBs PBDEs	BL IN BL BL --- ---	--- ND --- --- --- ---	Comply Comply Comply Comply --- ---	16 Apr 2018



SGS-CSTC (Shanghai) Technical Services Co., Ltd.  
Ningbo Branch Chemical Laboratory

Unless otherwise agreed in writing, this document is issued by the Company subject to its General Conditions of Service printed overleaf, available on request or accessible at <http://www.sgs.com/en/Terms-and-Conditions.aspx> and, for electronic format documents, subject to Terms and Conditions for Electronic Documents at <http://www.sgs.com/en/Terms-and-Conditions/Terms-e-Document.aspx>. Attention is drawn to the limitation of liability, indemnification and jurisdiction issues defined therein. Any holder of this document is advised that information contained hereon reflects the Company's findings at the time of its intervention only and within the limits of Client's instructions, if any. The Company's sole responsibility is to its Client and this document does not exonerate parties to a transaction from exercising all their rights and obligations under the transaction documents. This document cannot be reproduced except in full, without prior written approval of the Company. Any unauthorized alteration, forgery or falsification of the content or appearance of this document is unlawful and offenders may be prosecuted to the fullest extent of the law. Unless otherwise stated the results shown in this test report refer only to the sample(s) tested.

Attention: To check the authenticity of testing / inspection report & certificate, please contact us at telephone: (86-755) 8307 1443, or email: [CN.Doccheck@sgs.com](mailto:CN.Doccheck@sgs.com)

15F West of Building 4, Lingyun Industry Park, No. 1177 Lingyun Road, Ningbo National Hi-Tech Zone, Ningbo, Zhejiang, China 315040 t E&E (86-574)89070249  
中国·浙江·宁波市国家高新区凌云路1177号凌云产业园4号楼西1-5层 邮编: 315040 t HL (86-574)89070271 t ML (86-574)89070242 e [sgs.china@sgs.com](mailto:sgs.china@sgs.com)

[www.sgs.com](http://www.sgs.com)

Part No.	Part Description	BOM No.	Restricted Substances	Results of EDXRF (1)	Result of Wet Chemical Testing(2) (mg/kg)	Conclusion on EU RoHS	Sample Submitted / Resubmitted Date
13	MWFS518-3-Golden metal piece		Pb Cd Hg Cr(VI)▼ PBBs PBDEs	BL BL BL BL --- ---	--- --- --- --- --- ---	Comply Comply Comply Comply --- ---	16 Apr 2018
14	MWFS518-3-White plastic shell		Pb Cd Hg Cr(VI)▼ PBBs PBDEs	BL BL BL BL BL BL	--- --- --- --- --- ---	Comply Comply Comply Comply Comply Comply	16 Apr 2018
15	MWFS518-3-Gray metal nut		Pb Cd Hg Cr(VI)▼ PBBs PBDEs	BL BL BL BL --- ---	--- --- --- --- --- ---	Comply Comply Comply Comply --- ---	16 Apr 2018
16	MWFS518-3-Brown plastic piece		Pb Cd Hg Cr(VI)▼ PBBs PBDEs	BL BL BL BL BL BL	--- --- --- --- --- ---	Comply Comply Comply Comply Comply Comply	16 Apr 2018



SGS-CSTC (China) Technical Services Co., Ltd.  
Ningbo Branch Chemical Laboratory

Unless otherwise agreed in writing, this document is issued by the Company subject to its General Conditions of Service printed overleaf, available on request or accessible at <http://www.sgs.com/en/Terms-and-Conditions.aspx> and, for electronic format documents, subject to Terms and Conditions for Electronic Documents at <http://www.sgs.com/en/Terms-and-Conditions/Terms-e-Document.aspx>. Attention is drawn to the limitation of liability, indemnification and jurisdiction issues defined therein. Any holder of this document is advised that information contained hereon reflects the Company's findings at the time of its intervention only and within the limits of Client's instructions, if any. The Company's sole responsibility is to its Client and this document does not exonerate parties to a transaction from exercising all their rights and obligations under the transaction documents. This document cannot be reproduced except in full, without prior written approval of the Company. Any unauthorized alteration, forgery or falsification of the content or appearance of this document is unlawful and offenders may be prosecuted to the fullest extent of the law. Unless otherwise stated the results shown in this test report refer only to the sample(s) tested.

Attention: To check the authenticity of testing / inspection report & certificate, please contact us at telephone: (86-755) 8307 1443, or email: [CN.Doccheck@sgs.com](mailto:CN.Doccheck@sgs.com)

15/F West of Building 4, Lingyun Industry Park, No. 1177 Lingyun Road, Ningbo National Hi-Tech Zone, Ningbo, Zhejiang, China 315040 t E&E (86-574)89070249  
中国·浙江·宁波市国家高新区凌云路1177号凌云产业园4号楼西1-5层 邮编: 315040 t HL (86-574)89070271 t ML (86-574)89070242 e [sgs.china@sgs.com](mailto:sgs.china@sgs.com)

[www.sgs.com](http://www.sgs.com)

Part No.	Part Description	BOM No.	Restricted Substances	Results of EDXRF (1)	Result of Wet Chemical Testing(2) (mg/kg)	Conclusion on EU RoHS	Sample Submitted / Resubmitted Date
17	MWFS518-3-Silvery metal piece		Pb Cd Hg Cr(VI)▼ PBBs PBDEs	BL BL BL BL --- ---	--- --- --- --- --- ---	Comply Comply Comply Comply --- ---	16 Apr 2018
18	MWFS518-3-White plastic jacket		Pb Cd Hg Cr(VI)▼ PBBs PBDEs	BL BL BL BL BL BL	--- --- --- --- --- ---	Comply Comply Comply Comply Comply Comply	16 Apr 2018
19	MWFS518-3-Blue plastic jacket		Pb Cd Hg Cr(VI)▼ PBBs PBDEs	BL BL BL BL BL BL	--- --- --- --- --- ---	Comply Comply Comply Comply Comply Comply	16 Apr 2018
20	MWFS518-3-Red plastic jacket		Pb Cd Hg Cr(VI)▼ PBBs PBDEs	BL BL BL BL BL BL	--- --- --- --- --- ---	Comply Comply Comply Comply Comply Comply	16 Apr 2018



SGS-CSTC (Shanghai) Technical Services Co., Ltd.  
Ningbo Branch Chemical Laboratory

Unless otherwise agreed in writing, this document is issued by the Company subject to its General Conditions of Service printed overleaf, available on request or accessible at <http://www.sgs.com/en/Terms-and-Conditions.aspx> and, for electronic format documents, subject to Terms and Conditions for Electronic Documents at <http://www.sgs.com/en/Terms-and-Conditions/Terms-e-Document.aspx>. Attention is drawn to the limitation of liability, indemnification and jurisdiction issues defined therein. Any holder of this document is advised that information contained hereon reflects the Company's findings at the time of its intervention only and within the limits of Client's instructions, if any. The Company's sole responsibility is to its Client and this document does not exonerate parties to a transaction from exercising all their rights and obligations under the transaction documents. This document cannot be reproduced except in full, without prior written approval of the Company. Any unauthorized alteration, forgery or falsification of the content or appearance of this document is unlawful and offenders may be prosecuted to the fullest extent of the law. Unless otherwise stated the results shown in this test report refer only to the sample(s) tested.

**Attention: To check the authenticity of testing / inspection report & certificate, please contact us at telephone: (86-755) 8307 1443, or email: [CN.Doccheck@sgs.com](mailto:CN.Doccheck@sgs.com)**

15/F West of Building 4, Lingyun Industry Park, No. 1177 Lingyun Road, Ningbo National Hi-Tech Zone, Ningbo, Zhejiang, China 315040 t E&E (86-574)89070249  
中国·浙江·宁波市国家高新区凌云路1177号凌云产业园4号楼西1-5层 邮编: 315040 t HL (86-574)89070271 t ML (86-574)89070242 e [sgs.china@sgs.com](mailto:sgs.china@sgs.com)

[www.sgs.com](http://www.sgs.com)

Part No.	Part Description	BOM No.	Restricted Substances	Results of EDXRF (1)	Result of Wet Chemical Testing(2) (mg/kg)	Conclusion on EU RoHS	Sample Submitted / Resubmitted Date
21	MWFS518-3-Copper-colored metal pin		Pb Cd Hg Cr(VI)▼ PBBs PBDEs	BL BL BL BL --- ---	--- --- --- --- --- ---	Comply Comply Comply Comply --- ---	16 Apr 2018
22	MWFS518-3-Black plastic sheath		Pb Cd Hg Cr(VI)▼ PBBs PBDEs	BL BL BL BL BL BL	--- --- --- --- --- ---	Comply Comply Comply Comply Comply Comply	16 Apr 2018
23	MWFS518-3-Red plastic lump		Pb Cd Hg Cr(VI)▼ PBBs PBDEs	BL BL BL BL BL BL	--- --- --- --- --- ---	Comply Comply Comply Comply Comply Comply	16 Apr 2018
24	MWFS518-3-White plastic lump		Pb Cd Hg Cr(VI)▼ PBBs PBDEs	BL BL BL BL BL BL	--- --- --- --- --- ---	Comply Comply Comply Comply Comply Comply	16 Apr 2018



SGS-CSTC (Shanghai) Technical Services Co., Ltd.  
Ningbo Branch Chemical Laboratory

Unless otherwise agreed in writing, this document is issued by the Company subject to its General Conditions of Service printed overleaf, available on request or accessible at <http://www.sgs.com/en/Terms-and-Conditions.aspx> and, for electronic format documents, subject to Terms and Conditions for Electronic Documents at <http://www.sgs.com/en/Terms-and-Conditions/Terms-e-Documents.aspx>. Attention is drawn to the limitation of liability, indemnification and jurisdiction issues defined therein. Any holder of this document is advised that information contained hereon reflects the Company's findings at the time of its intervention only and within the limits of Client's instructions, if any. The Company's sole responsibility is to its Client and this document does not exonerate parties to a transaction from exercising all their rights and obligations under the transaction documents. This document cannot be reproduced except in full, without prior written approval of the Company. Any unauthorized alteration, forgery or falsification of the content or appearance of this document is unlawful and offenders may be prosecuted to the fullest extent of the law. Unless otherwise stated the results shown in this test report refer only to the sample(s) tested.

**Attention: To check the authenticity of testing / inspection report & certificate, please contact us at telephone: (86-755) 8307 1443, or email: [CN.Doccheck@sgs.com](mailto:CN.Doccheck@sgs.com)**

15F West of Building 4, Lingyun Industry Park, No. 1177 Lingyun Road, Ningbo National Hi-Tech Zone, Ningbo, Zhejiang, China 315040 t E&E (86-574)89070249  
中国·浙江·宁波市国家高新区凌云路1177号凌云产业园4号楼西1-5层 邮编: 315040 t HL (86-574)89070271 t ML (86-574)89070242 e [sgs.china@sgs.com](mailto:sgs.china@sgs.com)

[www.sgs.com](http://www.sgs.com)

Part No.	Part Description	BOM No.	Restricted Substances	Results of EDXRF (1)	Result of Wet Chemical Testing(2) (mg/kg)	Conclusion on EU RoHS	Sample Submitted / Resubmitted Date
25	MWFS518-3-Gray metal lump		Pb Cd Hg Cr(VI)▼ PBBs PBDEs	IN BL BL BL --- ---	862 --- --- --- --- ---	Comply Comply Comply Comply --- ---	16 Apr 2018
26	MWFS518-3-White plastic shell		Pb Cd Hg Cr(VI)▼ PBBs PBDEs	BL BL BL BL BL BL	--- --- --- --- --- ---	Comply Comply Comply Comply Comply Comply	16 Apr 2018
27	MWFS511-Red plastic shell		Pb Cd Hg Cr(VI)▼ PBBs PBDEs	BL BL BL BL BL BL	--- --- --- --- --- ---	Comply Comply Comply Comply Comply Comply	16 Apr 2018
28	MWFS511-Black rubber lump		Pb Cd Hg Cr(VI)▼ PBBs PBDEs	BL BL BL BL BL BL	--- --- --- --- --- ---	Comply Comply Comply Comply Comply Comply	16 Apr 2018



Unless otherwise agreed in writing, this document is issued by the Company subject to its General Conditions of Service printed overleaf, available on request or accessible at <http://www.sgs.com/en/Terms-and-Conditions.aspx> and, for electronic format documents, subject to Terms and Conditions for Electronic Documents at <http://www.sgs.com/en/Terms-and-Conditions/Terms-e-Document.aspx>. Attention is drawn to the limitation of liability, indemnification and jurisdiction issues defined therein. Any holder of this document is advised that information contained hereon reflects the Company's findings at the time of its intervention only and within the limits of Client's instructions, if any. The Company's sole responsibility is to its Client and this document does not exonerate parties to a transaction from exercising all their rights and obligations under the transaction documents. This document cannot be reproduced except in full, without prior written approval of the Company. Any unauthorized alteration, forgery or falsification of the content or appearance of this document is unlawful and offenders may be prosecuted to the fullest extent of the law. Unless otherwise stated the results shown in this test report refer only to the sample(s) tested.

Attention: To check the authenticity of testing / inspection report & certificate, please contact us at telephone: (86-755) 8307 1443, or email: [CN.Doccheck@sgs.com](mailto:CN.Doccheck@sgs.com)

SGS-CSTC (Shanghai) Technical Services Co., Ltd.  
Ningbo Branch Chemical Laboratory

15/F West of Building 4, Lingyun Industry Park, No. 1177 Lingyun Road, Ningbo National Hi-Tech Zone, Ningbo, Zhejiang, China 315040 t E&E (86-574)89070249  
中国·浙江·宁波市国家高新区凌云路1177号凌云产业园4号楼西1-5层 邮编: 315040 t HL (86-574)89070271 t ML (86-574)89070242 e [sgs.china@sgs.com](mailto:sgs.china@sgs.com)

[www.sgs.com](http://www.sgs.com)

Part No.	Part Description	BOM No.	Restricted Substances	Results of EDXRF (1)	Result of Wet Chemical Testing(2) (mg/kg)	Conclusion on EU RoHS	Sample Submitted / Resubmitted Date
29	MWFS511-Silvery metal piece		Pb Cd Hg Cr(VI)▼ PBBs PBDEs	BL BL BL BL --- ---	--- --- --- --- --- ---	Comply Comply Comply Comply --- ---	16 Apr 2018
30	MWFS511-Silvery metal piece(switch)		Pb Cd Hg Cr(VI)▼ PBBs PBDEs	BL BL BL BL --- ---	--- --- --- --- --- ---	Comply Comply Comply Comply --- ---	16 Apr 2018
31	MWFS511-Silvery metal cap(switch)		Pb Cd Hg Cr(VI)▼ PBBs PBDEs	BL BL BL BL --- ---	--- --- --- --- --- ---	Comply Comply Comply Comply --- ---	16 Apr 2018
32	MWFS511-Silvery metal piece(switch)		Pb Cd Hg Cr(VI)▼ PBBs PBDEs	BL BL BL BL --- ---	--- --- --- --- --- ---	Comply Comply Comply Comply --- ---	16 Apr 2018



SGS-CSTC (Shanghai) Technical Services Co., Ltd.  
Ningbo Branch Chemical Laboratory

Unless otherwise agreed in writing, this document is issued by the Company subject to its General Conditions of Service printed overleaf, available on request or accessible at <http://www.sgs.com/en/Terms-and-Conditions.aspx> and, for electronic format documents, subject to Terms and Conditions for Electronic Documents at <http://www.sgs.com/en/Terms-and-Conditions/Terms-e-Document.aspx>. Attention is drawn to the limitation of liability, indemnification and jurisdiction issues defined therein. Any holder of this document is advised that information contained hereon reflects the Company's findings at the time of its intervention only and within the limits of Client's instructions, if any. The Company's sole responsibility is to its Client and this document does not exonerate parties to a transaction from exercising all their rights and obligations under the transaction documents. This document cannot be reproduced except in full, without prior written approval of the Company. Any unauthorized alteration, forgery or falsification of the content or appearance of this document is unlawful and offenders may be prosecuted to the fullest extent of the law. Unless otherwise stated the results shown in this test report refer only to the sample(s) tested.

Attention: To check the authenticity of testing / inspection report & certificate, please contact us at telephone: (86-755) 8307 1443, or email: [CN.Doccheck@sgs.com](mailto:CN.Doccheck@sgs.com)

15F West of Building 4, Lingyun Industry Park, No. 1177 Lingyun Road, Ningbo National Hi-Tech Zone, Ningbo, Zhejiang, China 315040 t E&E (86-574)89070249  
中国·浙江·宁波市国家高新区凌云路1177号凌云产业园4号楼西1-5层 邮编: 315040 t HL (86-574)89070271 t ML (86-574)89070242 e [sgs.china@sgs.com](mailto:sgs.china@sgs.com)

[www.sgs.com](http://www.sgs.com)

Part No.	Part Description	BOM No.	Restricted Substances	Results of EDXRF (1)	Result of Wet Chemical Testing(2) (mg/kg)	Conclusion on EU RoHS	Sample Submitted / Resubmitted Date
33	MWFS511-Black metal spring(switch)		Pb Cd Hg Cr(VI)▼ PBBs PBDEs	BL BL BL BL --- ---	--- --- --- --- --- ---	Comply Comply Comply Comply --- ---	16 Apr 2018
34	MWFS511-Red plastic lump(switch)		Pb Cd Hg Cr(VI)▼ PBBs PBDEs	BL BL BL BL BL BL	--- --- --- --- --- ---	Comply Comply Comply Comply Comply Comply	16 Apr 2018
35	MWFS511-Brown plastic lump(switch)		Pb Cd Hg Cr(VI)▼ PBBs PBDEs	BL BL BL BL BL BL	--- --- --- --- --- ---	Comply Comply Comply Comply Comply Comply	16 Apr 2018
36	MWFS511-Copper-colored metal pin(switch)		Pb Cd Hg Cr(VI)▼ PBBs PBDEs	BL BL BL BL --- ---	--- --- --- --- --- ---	Comply Comply Comply Comply --- ---	16 Apr 2018



Unless otherwise agreed in writing, this document is issued by the Company subject to its General Conditions of Service printed overleaf, available on request or accessible at <http://www.sgs.com/en/Terms-and-Conditions.aspx> and, for electronic format documents, subject to Terms and Conditions for Electronic Documents at <http://www.sgs.com/en/Terms-and-Conditions/Terms-e-Document.aspx>. Attention is drawn to the limitation of liability, indemnification and jurisdiction issues defined therein. Any holder of this document is advised that information contained hereon reflects the Company's findings at the time of its intervention only and within the limits of Client's instructions, if any. The Company's sole responsibility is to its Client and this document does not exonerate parties to a transaction from exercising all their rights and obligations under the transaction documents. This document cannot be reproduced except in full, without prior written approval of the Company. Any unauthorized alteration, forgery or falsification of the content or appearance of this document is unlawful and offenders may be prosecuted to the fullest extent of the law. Unless otherwise stated the results shown in this test report refer only to the sample(s) tested.

**Attention: To check the authenticity of testing / inspection report & certificate, please contact us at telephone: (86-755) 8307 1443, or email: [CN.Doccheck@sgs.com](mailto:CN.Doccheck@sgs.com)**

SGS-CSTC (Shanghai) Technical Services Co., Ltd.  
Ningbo Branch Chemical Laboratory

15F West of Building 4, Lingyun Industry Park, No. 1177 Lingyun Road, Ningbo National Hi-Tech Zone, Ningbo, Zhejiang, China 315040 t E&E (86-574)89070249  
中国·浙江·宁波市国家高新区凌云路1177号凌云产业园4号楼西1-5层 邮编: 315040 t HL (86-574)89070271 t ML (86-574)89070242 e [sgs.china@sgs.com](mailto:sgs.china@sgs.com)

[www.sgs.com](http://www.sgs.com)

Part No.	Part Description	BOM No.	Restricted Substances	Results of EDXRF (1)	Result of Wet Chemical Testing(2) (mg/kg)	Conclusion on EU RoHS	Sample Submitted / Resubmitted Date
37	MWFS511-Silvery metal pin(switch)		Pb Cd Hg Cr(VI)▼ PBBs PBDEs	BL BL BL BL --- ---	--- --- --- --- --- ---	Comply Comply Comply Comply --- ---	16 Apr 2018
38	MWFS511-Beige plastic shell(switch)		Pb Cd Hg Cr(VI)▼ PBBs PBDEs	BL BL BL BL IN IN	--- --- --- --- ND ND	Comply Comply Comply Comply Comply Comply	16 Apr 2018
39	MWFS512-Copper-colored metal piece(plug)		Pb Cd Hg Cr(VI)▼ PBBs PBDEs	BL BL BL BL --- ---	--- --- --- --- --- ---	Comply Comply Comply Comply --- ---	16 Apr 2018
40	MWFS512-Blue plastic shell		Pb Cd Hg Cr(VI)▼ PBBs PBDEs	BL BL BL BL BL BL	--- --- --- --- --- ---	Comply Comply Comply Comply Comply Comply	16 Apr 2018



SGS-CSTC (Shanghai) Technical Services Co., Ltd.  
Ningbo Branch Chemical Laboratory

Unless otherwise agreed in writing, this document is issued by the Company subject to its General Conditions of Service printed overleaf, available on request or accessible at <http://www.sgs.com/en/Terms-and-Conditions.aspx> and, for electronic format documents, subject to Terms and Conditions for Electronic Documents at <http://www.sgs.com/en/Terms-and-Conditions/Terms-e-Documents.aspx>. Attention is drawn to the limitation of liability, indemnification and jurisdiction issues defined therein. Any holder of this document is advised that information contained hereon reflects the Company's findings at the time of its intervention only and within the limits of Client's instructions, if any. The Company's sole responsibility is to its Client and this document does not exonerate parties to a transaction from exercising all their rights and obligations under the transaction documents. This document cannot be reproduced except in full, without prior written approval of the Company. Any unauthorized alteration, forgery or falsification of the content or appearance of this document is unlawful and offenders may be prosecuted to the fullest extent of the law. Unless otherwise stated the results shown in this test report refer only to the sample(s) tested.

Attention: To check the authenticity of testing / inspection report & certificate, please contact us at telephone: (86-755) 8307 1443, or email: [CN.Doccheck@sgs.com](mailto:CN.Doccheck@sgs.com)

15F West of Building 4, Lingyun Industry Park, No. 1177 Lingyun Road, Ningbo National Hi-Tech Zone, Ningbo, Zhejiang, China 315040 t E&E (86-574)89070249  
中国·浙江·宁波市国家高新区凌云路1177号凌云产业园4号楼西1-5层 邮编: 315040 t HL (86-574)89070271 t ML (86-574)89070242 e [sgs.china@sgs.com](mailto:sgs.china@sgs.com)

[www.sgs.com](http://www.sgs.com)

Part No.	Part Description	BOM No.	Restricted Substances	Results of EDXRF (1)	Result of Wet Chemical Testing(2) (mg/kg)	Conclusion on EU RoHS	Sample Submitted / Resubmitted Date
41	MWFS512-Blue plastic lump		Pb Cd Hg Cr(VI)▼ PBBs PBDEs	BL BL BL BL BL BL	--- --- --- --- --- ---	Comply Comply Comply Comply Comply Comply	16 Apr 2018
42	MWFS512-Black plastic jacket(wire)(PCB)		Pb Cd Hg Cr(VI)▼ PBBs PBDEs	BL BL BL BL BL BL	--- --- --- --- --- ---	Comply Comply Comply Comply Comply Comply	16 Apr 2018
43	MWFS512-White plastic jacket(wire)(PCB)		Pb Cd Hg Cr(VI)▼ PBBs PBDEs	BL BL BL BL BL BL	--- --- --- --- --- ---	Comply Comply Comply Comply Comply Comply	16 Apr 2018
44	MWFS512-Black diode body(PCB)		Pb Cd Hg Cr(VI)▼ PBBs PBDEs	BL BL BL BL IN IN	--- --- --- --- ND ND	Comply Comply Comply Comply Comply Comply	16 Apr 2018



Unless otherwise agreed in writing, this document is issued by the Company subject to its General Conditions of Service printed overleaf, available on request or accessible at <http://www.sgs.com/en/Terms-and-Conditions.aspx> and, for electronic format documents, subject to Terms and Conditions for Electronic Documents at <http://www.sgs.com/en/Terms-and-Conditions/Terms-e-Documents.aspx>. Attention is drawn to the limitation of liability, indemnification and jurisdiction issues defined therein. Any holder of this document is advised that information contained hereon reflects the Company's findings at the time of its intervention only and within the limits of Client's instructions, if any. The Company's sole responsibility is to its Client and this document does not exonerate parties to a transaction from exercising all their rights and obligations under the transaction documents. This document cannot be reproduced except in full, without prior written approval of the Company. Any unauthorized alteration, forgery or falsification of the content or appearance of this document is unlawful and offenders may be prosecuted to the fullest extent of the law. Unless otherwise stated the results shown in this test report refer only to the sample(s) tested.

**Attention: To check the authenticity of testing / inspection report & certificate, please contact us at telephone: (86-755) 8307 1443, or email: [CN.Doccheck@sgs.com](mailto:CN.Doccheck@sgs.com)**

SGS-CSTC (Shanghai) Technical Services Co., Ltd.  
Ningbo Branch Chemical Laboratory

15F West of Building 4, Lingyun Industry Park, No. 1177 Lingyun Road, Ningbo National Hi-Tech Zone, Ningbo, Zhejiang, China 315040 t E&E (86-574)89070249  
中国·浙江·宁波市国家高新区凌云路1177号凌云产业园4号楼西1-5层 邮编: 315040 t HL (86-574)89070271 t ML (86-574)89070242 e [sgs.china@sgs.com](mailto:sgs.china@sgs.com)

[www.sgs.com](http://www.sgs.com)

Part No.	Part Description	BOM No.	Restricted Substances	Results of EDXRF (1)	Result of Wet Chemical Testing(2) (mg/kg)	Conclusion on EU RoHS	Sample Submitted / Resubmitted Date
45	MWFS512-Black IC body(PCB)		Pb Cd Hg Cr(VI)▼ PBBs PBDEs	BL BL BL BL BL BL	--- --- --- --- --- ---	Comply Comply Comply Comply Comply Comply	16 Apr 2018
46	MWFS512-Blue capacitor body(PCB)		Pb Cd Hg Cr(VI)▼ PBBs PBDEs	BL BL BL BL BL BL	--- --- --- --- --- ---	Comply Comply Comply Comply Comply Comply	16 Apr 2018
47	MWFS512-Black audion body(PCB)		Pb Cd Hg Cr(VI)▼ PBBs PBDEs	BL BL BL BL IN IN	--- --- --- --- ND ND	Comply Comply Comply Comply Comply Comply	16 Apr 2018
48	MWFS512-Black plastic jacket(capacitor)(PCB)		Pb Cd Hg Cr(VI)▼ PBBs PBDEs	BL BL BL BL BL BL	--- --- --- --- --- ---	Comply Comply Comply Comply Comply Comply	16 Apr 2018



Unless otherwise agreed in writing, this document is issued by the Company subject to its General Conditions of Service printed overleaf, available on request or accessible at <http://www.sgs.com/en/Terms-and-Conditions.aspx> and, for electronic format documents, subject to Terms and Conditions for Electronic Documents at <http://www.sgs.com/en/Terms-and-Conditions/Terms-e-Documents.aspx>. Attention is drawn to the limitation of liability, indemnification and jurisdiction issues defined therein. Any holder of this document is advised that information contained hereon reflects the Company's findings at the time of its intervention only and within the limits of Client's instructions, if any. The Company's sole responsibility is to its Client and this document does not exonerate parties to a transaction from exercising all their rights and obligations under the transaction documents. This document cannot be reproduced except in full, without prior written approval of the Company. Any unauthorized alteration, forgery or falsification of the content or appearance of this document is unlawful and offenders may be prosecuted to the fullest extent of the law. Unless otherwise stated the results shown in this test report refer only to the sample(s) tested.

**Attention: To check the authenticity of testing / inspection report & certificate, please contact us at telephone: (86-755) 8307 1443, or email: [CN.Doccheck@sgs.com](mailto:CN.Doccheck@sgs.com)**

SGS-CSTC (China) Technical Services Co., Ltd.  
Ningbo Branch Chemical Laboratory

15F West of Building 4, Lingyun Industry Park, No. 1177 Lingyun Road, Ningbo National Hi-Tech Zone, Ningbo, Zhejiang, China 315040 t E&E (86-574)89070249  
中国·浙江·宁波市国家高新区凌云路1177号凌云产业园4号楼西1-5层 邮编: 315040 t HL (86-574)89070271 t ML (86-574)89070242 e [sgs.china@sgs.com](mailto:sgs.china@sgs.com)

[www.sgs.com](http://www.sgs.com)

Part No.	Part Description	BOM No.	Restricted Substances	Results of EDXRF (1)	Result of Wet Chemical Testing(2) (mg/kg)	Conclusion on EU RoHS	Sample Submitted / Resubmitted Date
49	MWFS512-Brown capacitor body(PCB)		Pb Cd Hg Cr(VI)▼ PBBs PBDEs	BL BL BL BL BL BL	--- --- --- --- --- ---	Comply Comply Comply Comply Comply Comply	16 Apr 2018
50	MWFS512-Yellow solid adhesive(capacitor) (PCB)		Pb Cd Hg Cr(VI)▼ PBBs PBDEs	BL BL BL BL BL BL	--- --- --- --- --- ---	Comply Comply Comply Comply Comply Comply	16 Apr 2018
51	MWFS512-Yellow plastic shell(capacitor)(PCB)		Pb Cd Hg Cr(VI)▼ PBBs PBDEs	BL BL BL BL IN IN	--- --- --- --- ND ND	Comply Comply Comply Comply Comply Comply	16 Apr 2018
52	MWFS512-Silvery metal cover(switch)(PCB)		Pb Cd Hg Cr(VI)▼ PBBs PBDEs	BL BL BL BL --- ---	--- --- --- --- --- ---	Comply Comply Comply Comply --- ---	16 Apr 2018



Unless otherwise agreed in writing, this document is issued by the Company subject to its General Conditions of Service printed overleaf, available on request or accessible at <http://www.sgs.com/en/Terms-and-Conditions.aspx> and, for electronic format documents, subject to Terms and Conditions for Electronic Documents at <http://www.sgs.com/en/Terms-and-Conditions/Terms-e-Document.aspx>. Attention is drawn to the limitation of liability, indemnification and jurisdiction issues defined therein. Any holder of this document is advised that information contained hereon reflects the Company's findings at the time of its intervention only and within the limits of Client's instructions, if any. The Company's sole responsibility is to its Client and this document does not exonerate parties to a transaction from exercising all their rights and obligations under the transaction documents. This document cannot be reproduced except in full, without prior written approval of the Company. Any unauthorized alteration, forgery or falsification of the content or appearance of this document is unlawful and offenders may be prosecuted to the fullest extent of the law. Unless otherwise stated the results shown in this test report refer only to the sample(s) tested.

**Attention: To check the authenticity of testing / inspection report & certificate, please contact us at telephone: (86-755) 8307 1443, or email: [CN.Doccheck@sgs.com](mailto:CN.Doccheck@sgs.com)**

SGS-CSTC (China) Technical Services Co., Ltd.  
Ningbo Branch Chemical Laboratory

15F West of Building 4, Lingyun Industry Park, No. 1177 Lingyun Road, Ningbo National Hi-Tech Zone, Ningbo, Zhejiang, China 315040 t E&E (86-574)89070249  
中国·浙江·宁波市国家高新区凌云路1177号凌云产业园4号楼西1-5层 邮编: 315040 t HL (86-574)89070271 t ML (86-574)89070242 e [sgs.china@sgs.com](mailto:sgs.china@sgs.com)

[www.sgs.com](http://www.sgs.com)

Part No.	Part Description	BOM No.	Restricted Substances	Results of EDXRF (1)	Result of Wet Chemical Testing(2) (mg/kg)	Conclusion on EU RoHS	Sample Submitted / Resubmitted Date
53	MWFS512-Black plastic shell(switch)(PCB)		Pb Cd Hg Cr(VI)▼ PBBs PBDEs	BL BL BL BL BL BL	--- --- --- --- --- ---	Comply Comply Comply Comply Comply Comply	16 Apr 2018
54 -C	MWFS512-Silvery metal soldering tin		Pb Cd Hg Cr(VI)▼ PBBs PBDEs	BL BL BL BL --- ---	--- --- --- --- --- ---	Comply Comply Comply Comply --- ---	16 Apr 2018
55	MWFS512-Green PCB body(PCB)		Pb Cd Hg Cr(VI)▼ PBBs PBDEs	BL BL BL BL BL BL	--- --- --- --- --- ---	Comply Comply Comply Comply Comply Comply	16 Apr 2018
56	MWFS516-Pink plastic shell		Pb Cd Hg Cr(VI)▼ PBBs PBDEs	BL BL BL BL BL BL	--- --- --- --- --- ---	Comply Comply Comply Comply Comply Comply	16 Apr 2018



SGS-CSTC (Shanghai) Technical Services Co., Ltd.  
Ningbo Branch Chemical Laboratory

Unless otherwise agreed in writing, this document is issued by the Company subject to its General Conditions of Service printed overleaf, available on request or accessible at <http://www.sgs.com/en/Terms-and-Conditions.aspx> and, for electronic format documents, subject to Terms and Conditions for Electronic Documents at <http://www.sgs.com/en/Terms-and-Conditions/Terms-e-Document.aspx>. Attention is drawn to the limitation of liability, indemnification and jurisdiction issues defined therein. Any holder of this document is advised that information contained hereon reflects the Company's findings at the time of its intervention only and within the limits of Client's instructions, if any. The Company's sole responsibility is to its Client and this document does not exonerate parties to a transaction from exercising all their rights and obligations under the transaction documents. This document cannot be reproduced except in full, without prior written approval of the Company. Any unauthorized alteration, forgery or falsification of the content or appearance of this document is unlawful and offenders may be prosecuted to the fullest extent of the law. Unless otherwise stated the results shown in this test report refer only to the sample(s) tested.

Attention: To check the authenticity of testing / inspection report & certificate, please contact us at telephone: (86-755) 8307 1443, or email: [CN.Doccheck@sgs.com](mailto:CN.Doccheck@sgs.com)

15F West of Building 4, Lingyun Industry Park, No. 1177 Lingyun Road, Ningbo National Hi-Tech Zone, Ningbo, Zhejiang, China 315040 t E&E (86-574)89070249  
中国·浙江·宁波市国家高新区凌云路1177号凌云产业园4号楼西1-5层 邮编: 315040 t HL (86-574)89070271 t ML (86-574)89070242 e [sgs.china@sgs.com](mailto:sgs.china@sgs.com)

[www.sgs.com](http://www.sgs.com)

Part No.	Part Description	BOM No.	Restricted Substances	Results of EDXRF (1)	Result of Wet Chemical Testing(2) (mg/kg)	Conclusion on EU RoHS	Sample Submitted / Resubmitted Date
57	MWFS518-Silvery coating		Pb Cd Hg Cr(VI)▼ PBBs PBDEs	BL BL BL BL BL BL	--- --- --- --- --- ---	Comply Comply Comply Comply Comply Comply	16 Apr 2018
58	MWFS518-White plastic base		Pb Cd Hg Cr(VI)▼ PBBs PBDEs	BL BL BL BL BL BL	--- --- --- --- --- ---	Comply Comply Comply Comply Comply Comply	16 Apr 2018
59	MWFS518-1-Purple plastic shell		Pb Cd Hg Cr(VI)▼ PBBs PBDEs	BL BL BL BL BL BL	--- --- --- --- --- ---	Comply Comply Comply Comply Comply Comply	16 Apr 2018
60	MWFS518-2-Blue plastic shell		Pb Cd Hg Cr(VI)▼ PBBs PBDEs	BL BL BL BL BL BL	--- --- --- --- --- ---	Comply Comply Comply Comply Comply Comply	16 Apr 2018



SGS-CSTC (Shanghai) Technical Services Co., Ltd.  
Ningbo Branch Chemical Laboratory

Unless otherwise agreed in writing, this document is issued by the Company subject to its General Conditions of Service printed overleaf, available on request or accessible at <http://www.sgs.com/en/Terms-and-Conditions.aspx> and, for electronic format documents, subject to Terms and Conditions for Electronic Documents at <http://www.sgs.com/en/Terms-and-Conditions/Terms-e-Documents.aspx>. Attention is drawn to the limitation of liability, indemnification and jurisdiction issues defined therein. Any holder of this document is advised that information contained hereon reflects the Company's findings at the time of its intervention only and within the limits of Client's instructions, if any. The Company's sole responsibility is to its Client and this document does not exonerate parties to a transaction from exercising all their rights and obligations under the transaction documents. This document cannot be reproduced except in full, without prior written approval of the Company. Any unauthorized alteration, forgery or falsification of the content or appearance of this document is unlawful and offenders may be prosecuted to the fullest extent of the law. Unless otherwise stated the results shown in this test report refer only to the sample(s) tested.

Attention: To check the authenticity of testing / inspection report & certificate, please contact us at telephone: (86-755) 8307 1443, or email: [CN.Doccheck@sgs.com](mailto:CN.Doccheck@sgs.com)

15F West of Building 4, Lingyun Industry Park, No. 1177 Lingyun Road, Ningbo National Hi-Tech Zone, Ningbo, Zhejiang, China 315040 t E&E (86-574)89070249  
中国·浙江·宁波市国家高新区凌云路1177号凌云产业园4号楼西1-5层 邮编: 315040 t HL (86-574)89070271 t ML (86-574)89070242 e [sgs.china@sgs.com](mailto:sgs.china@sgs.com)

[www.sgs.com](http://www.sgs.com)

Part No.	Part Description	BOM No.	Restricted Substances	Results of EDXRF (1)	Result of Wet Chemical Testing(2) (mg/kg)	Conclusion on EU RoHS	Sample Submitted / Resubmitted Date
61	MWFS519-A-Black plastic shell		Pb Cd Hg Cr(VI)▼ PBBs PBDEs	BL BL BL BL BL BL	--- --- --- --- --- ---	Comply Comply Comply Comply Comply Comply	16 Apr 2018
62	MWFS519-A-Copper-colored metal piece		Pb Cd Hg Cr(VI)▼ PBBs PBDEs	BL BL BL BL --- ---	--- --- --- --- --- ---	Comply Comply Comply Comply --- ---	16 Apr 2018
63	MWFS519-A-Silvery plastic label		Pb Cd Hg Cr(VI)▼ PBBs PBDEs	BL BL BL BL BL BL	--- --- --- --- --- ---	Comply Comply Comply Comply Comply Comply	16 Apr 2018
64	MWFS519-A-Red rubber jacket		Pb Cd Hg Cr(VI)▼ PBBs PBDEs	BL BL BL BL BL BL	--- --- --- --- --- ---	Comply Comply Comply Comply Comply Comply	16 Apr 2018



Unless otherwise agreed in writing, this document is issued by the Company subject to its General Conditions of Service printed overleaf, available on request or accessible at <http://www.sgs.com/en/Terms-and-Conditions.aspx> and, for electronic format documents, subject to Terms and Conditions for Electronic Documents at <http://www.sgs.com/en/Terms-and-Conditions/Terms-e-Document.aspx>. Attention is drawn to the limitation of liability, indemnification and jurisdiction issues defined therein. Any holder of this document is advised that information contained hereon reflects the Company's findings at the time of its intervention only and within the limits of Client's instructions, if any. The Company's sole responsibility is to its Client and this document does not exonerate parties to a transaction from exercising all their rights and obligations under the transaction documents. This document cannot be reproduced except in full, without prior written approval of the Company. Any unauthorized alteration, forgery or falsification of the content or appearance of this document is unlawful and offenders may be prosecuted to the fullest extent of the law. Unless otherwise stated the results shown in this test report refer only to the sample(s) tested.

**Attention: To check the authenticity of testing / inspection report & certificate, please contact us at telephone: (86-755) 8307 1443, or email: [CN.Doccheck@sgs.com](mailto:CN.Doccheck@sgs.com)**

SGS-CSTC (China) Technical Services Co., Ltd.  
Ningbo Branch Chemical Laboratory

15F West of Building 4, Lingyun Industry Park, No. 1177 Lingyun Road, Ningbo National Hi-Tech Zone, Ningbo, Zhejiang, China 315040 t E&E (86-574)89070249  
中国·浙江·宁波市国家高新区凌云路1177号凌云产业园4号楼西1-5层 邮编: 315040 t HL (86-574)89070271 t ML (86-574)89070242 e [sgs.china@sgs.com](mailto:sgs.china@sgs.com)

[www.sgs.com](http://www.sgs.com)

Part No.	Part Description	BOM No.	Restricted Substances	Results of EDXRF (1)	Result of Wet Chemical Testing(2) (mg/kg)	Conclusion on EU RoHS	Sample Submitted / Resubmitted Date
65	MWFS519-A-Black plastic jacket		Pb Cd Hg Cr(VI)▼ PBBs PBDEs	BL BL BL BL BL BL	--- --- --- --- --- ---	Comply Comply Comply Comply Comply Comply	16 Apr 2018
66	MWFS519-A-Silvery metal rod		Pb Cd Hg Cr(VI)▼ PBBs PBDEs	BL BL BL BL --- ---	--- --- --- --- --- ---	Comply Comply Comply Comply --- ---	16 Apr 2018
67	MWFS519-A-Blue coating		Pb Cd Hg Cr(VI)▼ PBBs PBDEs	BL BL BL BL BL BL	--- --- --- --- --- ---	Comply Comply Comply Comply Comply Comply	16 Apr 2018
68	MWFS519-A-White plastic button		Pb Cd Hg Cr(VI)▼ PBBs PBDEs	BL BL BL BL BL BL	--- --- --- --- --- ---	Comply Comply Comply Comply Comply Comply	16 Apr 2018



Unless otherwise agreed in writing, this document is issued by the Company subject to its General Conditions of Service printed overleaf, available on request or accessible at <http://www.sgs.com/en/Terms-and-Conditions.aspx> and, for electronic format documents, subject to Terms and Conditions for Electronic Documents at <http://www.sgs.com/en/Terms-and-Conditions/Terms-e-Document.aspx>. Attention is drawn to the limitation of liability, indemnification and jurisdiction issues defined therein. Any holder of this document is advised that information contained hereon reflects the Company's findings at the time of its intervention only and within the limits of Client's instructions, if any. The Company's sole responsibility is to its Client and this document does not exonerate parties to a transaction from exercising all their rights and obligations under the transaction documents. This document cannot be reproduced except in full, without prior written approval of the Company. Any unauthorized alteration, forgery or falsification of the content or appearance of this document is unlawful and offenders may be prosecuted to the fullest extent of the law. Unless otherwise stated the results shown in this test report refer only to the sample(s) tested.

**Attention: To check the authenticity of testing / inspection report & certificate, please contact us at telephone: (86-755) 8307 1443, or email: [CN.Doccheck@sgs.com](mailto:CN.Doccheck@sgs.com)**

SGS-CSTC (China) Technical Services Co., Ltd.  
Ningbo Branch Chemical Laboratory

15F West of Building 4, Lingyun Industry Park, No. 1177 Lingyun Road, Ningbo National Hi-Tech Zone, Ningbo, Zhejiang, China 315040 t E&E (86-574)89070249  
中国·浙江·宁波市国家高新区凌云路1177号凌云产业园4号楼西1-5层 邮编: 315040 t HL (86-574)89070271 t ML (86-574)89070242 e [sgs.china@sgs.com](mailto:sgs.china@sgs.com)

[www.sgs.com](http://www.sgs.com)

Part No.	Part Description	BOM No.	Restricted Substances	Results of EDXRF (1)	Result of Wet Chemical Testing(2) (mg/kg)	Conclusion on EU RoHS	Sample Submitted / Resubmitted Date
69	MWFS519-B-Purple plastic lump		Pb	BL	---	Comply	16 Apr 2018
			Cd	BL	---	Comply	
			Hg	BL	---	Comply	
			Cr(VI)▼	BL	---	Comply	
			PBBs	BL	---	Comply	
			PBDEs	BL	---	Comply	
70	MWFS519-B-Purple plastic lump		Pb	BL	---	Comply	16 Apr 2018
			Cd	BL	---	Comply	
			Hg	BL	---	Comply	
			Cr(VI)▼	BL	---	Comply	
			PBBs	BL	---	Comply	
			PBDEs	BL	---	Comply	
71	MWFS519-B-Purple plastic shell		Pb	BL	---	Comply	16 Apr 2018
			Cd	BL	---	Comply	
			Hg	BL	---	Comply	
			Cr(VI)▼	BL	---	Comply	
			PBBs	BL	---	Comply	
			PBDEs	BL	---	Comply	
72	MWFS519-B-Purple coating		Pb	BL	---	Comply	16 Apr 2018
			Cd	BL	---	Comply	
			Hg	BL	---	Comply	
			Cr(VI)▼	BL	---	Comply	
			PBBs	BL	---	Comply	
			PBDEs	BL	---	Comply	



Unless otherwise agreed in writing, this document is issued by the Company subject to its General Conditions of Service printed overleaf, available on request or accessible at <http://www.sgs.com/en/Terms-and-Conditions.aspx> and, for electronic format documents, subject to Terms and Conditions for Electronic Documents at <http://www.sgs.com/en/Terms-and-Conditions/Terms-e-Document.aspx>. Attention is drawn to the limitation of liability, indemnification and jurisdiction issues defined therein. Any holder of this document is advised that information contained hereon reflects the Company's findings at the time of its intervention only and within the limits of Client's instructions, if any. The Company's sole responsibility is to its Client and this document does not exonerate parties to a transaction from exercising all their rights and obligations under the transaction documents. This document cannot be reproduced except in full, without prior written approval of the Company. Any unauthorized alteration, forgery or falsification of the content or appearance of this document is unlawful and offenders may be prosecuted to the fullest extent of the law. Unless otherwise stated the results shown in this test report refer only to the sample(s) tested.

**Attention: To check the authenticity of testing / inspection report & certificate, please contact us at telephone: (86-755) 8307 1443, or email: [CN.Doccheck@sgs.com](mailto:CN.Doccheck@sgs.com)**

SGS-CSTC (Shanghai) Technical Services Co., Ltd.  
Ningbo Branch Chemical Laboratory

15/F West of Building 4, Lingyun Industry Park, No. 1177 Lingyun Road, Ningbo National Hi-Tech Zone, Ningbo, Zhejiang, China 315040 t E&E (86-574)89070249  
中国·浙江·宁波市国家高新区凌云路1177号凌云产业园4号楼西1-5层 邮编: 315040 t HL (86-574)89070271 t ML (86-574)89070242 e [sgs.china@sgs.com](mailto:sgs.china@sgs.com)

[www.sgs.com](http://www.sgs.com)

Part No.	Part Description	BOM No.	Restricted Substances	Results of EDXRF (1)	Result of Wet Chemical Testing(2) (mg/kg)	Conclusion on EU RoHS	Sample Submitted / Resubmitted Date
73	MWFS519-B-Silvery metal piece(switch)		Pb Cd Hg Cr(VI)▼ PBBs PBDEs	BL BL BL BL --- ---	--- --- --- --- --- ---	Comply Comply Comply Comply --- ---	16 Apr 2018
74	MWFS519-B-Black metal spring(switch)		Pb Cd Hg Cr(VI)▼ PBBs PBDEs	BL BL BL BL --- ---	--- --- --- --- --- ---	Comply Comply Comply Comply --- ---	16 Apr 2018
75	MWFS519-B-Black plastic shell(switch)		Pb Cd Hg Cr(VI)▼ PBBs PBDEs	BL BL BL BL BL BL	--- --- --- --- --- ---	Comply Comply Comply Comply Comply Comply	16 Apr 2018
76	MWFS519-C-White coating		Pb Cd Hg Cr(VI)▼ PBBs PBDEs	BL BL BL BL BL BL	--- --- --- --- --- ---	Comply Comply Comply Comply Comply Comply	16 Apr 2018



SGS-CSTC (Shanghai) Technical Services Co., Ltd.  
Ningbo Branch Chemical Laboratory

Unless otherwise agreed in writing, this document is issued by the Company subject to its General Conditions of Service printed overleaf, available on request or accessible at <http://www.sgs.com/en/Terms-and-Conditions.aspx> and, for electronic format documents, subject to Terms and Conditions for Electronic Documents at <http://www.sgs.com/en/Terms-and-Conditions/Terms-e-Document.aspx>. Attention is drawn to the limitation of liability, indemnification and jurisdiction issues defined therein. Any holder of this document is advised that information contained hereon reflects the Company's findings at the time of its intervention only and within the limits of Client's instructions, if any. The Company's sole responsibility is to its Client and this document does not exonerate parties to a transaction from exercising all their rights and obligations under the transaction documents. This document cannot be reproduced except in full, without prior written approval of the Company. Any unauthorized alteration, forgery or falsification of the content or appearance of this document is unlawful and offenders may be prosecuted to the fullest extent of the law. Unless otherwise stated the results shown in this test report refer only to the sample(s) tested.

Attention: To check the authenticity of testing / inspection report & certificate, please contact us at telephone: (86-755) 8307 1443, or email: [CN.Doccheck@sgs.com](mailto:CN.Doccheck@sgs.com)

15/F West of Building 4, Lingyun Industry Park, No. 1177 Lingyun Road, Ningbo National Hi-Tech Zone, Ningbo, Zhejiang, China 315040 t E&E (86-574)89070249  
中国·浙江·宁波市国家高新区凌云路1177号凌云产业园4号楼西1-5层 邮编: 315040 t HL (86-574)89070271 t ML (86-574)89070242 e [sgs.china@sgs.com](mailto:sgs.china@sgs.com)

[www.sgs.com](http://www.sgs.com)

Part No.	Part Description	BOM No.	Restricted Substances	Results of EDXRF (1)	Result of Wet Chemical Testing(2) (mg/kg)	Conclusion on EU RoHS	Sample Submitted / Resubmitted Date
77	MWFS519-C-Gray plastic lump		Pb Cd Hg Cr(VI)▼ PBBs PBDEs	BL BL BL BL BL BL	--- --- --- --- --- ---	Comply Comply Comply Comply Comply Comply	16 Apr 2018
78	MWFS519-C-Gray metal lump		Pb Cd Hg Cr(VI)▼ PBBs PBDEs	BL BL BL IN --- ---	--- --- --- ND --- ---	Comply Comply Comply Comply --- ---	16 Apr 2018



SGS-CSTC Technical Services Co., Ltd.  
Ningbo Branch Chemical Laboratory

Unless otherwise agreed in writing, this document is issued by the Company subject to its General Conditions of Service printed overleaf, available on request or accessible at <http://www.sgs.com/en/Terms-and-Conditions.aspx> and, for electronic format documents, subject to Terms and Conditions for Electronic Documents at <http://www.sgs.com/en/Terms-and-Conditions/Terms-e-Documents.aspx>. Attention is drawn to the limitation of liability, indemnification and jurisdiction issues defined therein. Any holder of this document is advised that information contained hereon reflects the Company's findings at the time of its intervention only and within the limits of Client's instructions, if any. The Company's sole responsibility is to its Client and this document does not exonerate parties to a transaction from exercising all their rights and obligations under the transaction documents. This document cannot be reproduced except in full, without prior written approval of the Company. Any unauthorized alteration, forgery or falsification of the content or appearance of this document is unlawful and offenders may be prosecuted to the fullest extent of the law. Unless otherwise stated the results shown in this test report refer only to the sample(s) tested.

Attention: To check the authenticity of testing / inspection report & certificate, please contact us at telephone: (86-755) 8307 1443, or email: [CN.Doccheck@sgs.com](mailto:CN.Doccheck@sgs.com)

15F West of Building 4, Lingyun Industry Park, No. 1177 Lingyun Road, Ningbo National Hi-Tech Zone, Ningbo, Zhejiang, China 315040 t E&E (86-574)89070249  
中国·浙江·宁波市国家高新区凌云路1177号凌云产业园4号楼西1-5层 邮编: 315040 t HL (86-574)89070271 t ML (86-574)89070242 e [sgs.china@sgs.com](mailto:sgs.china@sgs.com)

[www.sgs.com](http://www.sgs.com)

## Verification Report

No. NGBEC1801560001

Date: 03 May 2018

Page 23 of 46

Remark :

(1) (a) There are the results on total Br while test items on restricted substances are PBBs and PBDEs. There is the result on total Cr while test item on restricted substances is Cr(VI).

(b) Results are obtained by EDXRF for primary screening, and further chemical testing by ICP-OES (for Cd, Pb, Hg), UV-Vis (for Cr(VI)) and GC-MS (for PBBs, PBDEs) is recommended to be performed, if the concentration exceeds the below warning value according to IEC62321-3-1:2013 (unit: mg/kg).

Element	Polymer	Metal	Composite Materials
Cd	$BL \leq (70-3\sigma) < X < (130+3\sigma) \leq OL$	$BL \leq (70-3\sigma) < X < (130+3\sigma) \leq OL$	$LOD < X < (150+3\sigma) \leq OL$
Pb	$BL \leq (700-3\sigma) < X < (1300+3\sigma) \leq OL$	$BL \leq (700-3\sigma) < X < (1300+3\sigma) \leq OL$	$BL \leq (500-3\sigma) < X < (1500+3\sigma) \leq OL$
Hg	$BL \leq (700-3\sigma) < X < (1300+3\sigma) \leq OL$	$BL \leq (700-3\sigma) < X < (1300+3\sigma) \leq OL$	$BL \leq (500-3\sigma) < X < (1500+3\sigma) \leq OL$
Br	$BL \leq (300-3\sigma) < X$	--	$BL \leq (250-3\sigma) < X$
Cr	$BL \leq (700-3\sigma) < X$	$BL \leq (700-3\sigma) < X$	$BL \leq (500-3\sigma) < X$

(c) BL = Below Limit, OL = Over Limit, IN = Inconclusive, LOD = Limit of Detection, -- = Not regulated.

(d) The XRF screening test for RoHS elements - The reading may be different to the actual content in the sample be of non-uniformity composition.

(2) (a) mg/kg = 0.0001%, MDL = Method detection Limit, ND = Not Detected (<MDL), --- = Not conducted, - = Without BOM.

(b) Unit and MDL in wet chemical test

Test Item	Pb	Cd	Hg
Unit	mg/kg	mg/kg	mg/kg
MDL	10	10	10

The MDL for single compound of PBBs and PBDEs is 100 mg/kg,  
MDL of Cr(VI) for polymer, composite and leather sample is 10 mg/kg,  
MDL of Cr(VI) for metal sample is 0.10 µg/cm².



Unless otherwise agreed in writing, this document is issued by the Company subject to its General Conditions of Service printed overleaf, available on request or accessible at <http://www.sgs.com/en/Terms-and-Conditions.aspx> and, for electronic format documents, subject to Terms and Conditions for Electronic Documents at <http://www.sgs.com/en/Terms-and-Conditions/Terms-e-Document.aspx>. Attention is drawn to the limitation of liability, indemnification and jurisdiction issues defined therein. Any holder of this document is advised that information contained hereon reflects the Company's findings at the time of its intervention only and within the limits of Client's instructions, if any. The Company's sole responsibility is to its Client and this document does not exonerate parties to a transaction from exercising all their rights and obligations under the transaction documents. This document cannot be reproduced except in full, without prior written approval of the Company. Any unauthorized alteration, forgery or falsification of the content or appearance of this document is unlawful and offenders may be prosecuted to the fullest extent of the law. Unless otherwise stated the results shown in this test report refer only to the sample(s) tested.

Attention: To check the authenticity of testing / inspection report & certificate, please contact us at telephone: (86-755) 8307 1443, or email: [CN.Doccheck@sgs.com](mailto:CN.Doccheck@sgs.com)

SGS-CSTC Technical Services Co., Ltd.  
Ningbo Branch Chemical Laboratory

15F West of Building 4, Lingyun Industry Park, No. 1177 Lingyun Road, Ningbo National Hi-Tech Zone, Ningbo, Zhejiang, China 315040 t E&E (86-574) 89070249  
中国·浙江·宁波市国家高新区凌云路1177号凌云产业园4号楼西1-5层 邮编: 315040 t HL (86-574) 89070271 t ML (86-574) 89070242 e [sgs.china@sgs.com](mailto:sgs.china@sgs.com)

[www.sgs.com](http://www.sgs.com)

(c) ▼ =Metal sample

- a. The sample is positive for CrVI if the CrVI concentration is greater than 0.13 µg/cm².  
The sample coating is considered to contain CrVI
- b. The sample is negative for CrVI if CrVI is ND (concentration less than 0.10 µg/cm²).  
The coating is considered a non-CrVI based coating
- c. The result between 0.10 µg/cm² and 0.13 µg/cm² is considered to be inconclusive  
- unavoidable coating variations may influence the determination

Information on storage conditions and production date of the tested sample is unavailable and thus Cr(VI) results represent status of the sample at the time of testing.

IEC 62321 series is equivalent to EN 62321 series

[http://www.cenelec.eu/dyn/www/f?p=104:30:1742232870351101:::FSP\\_ORG\\_ID,FSP\\_LANG\\_ID:1258637,25>](http://www.cenelec.eu/dyn/www/f?p=104:30:1742232870351101:::FSP_ORG_ID,FSP_LANG_ID:1258637,25>)



SGS-CSTC Technical Services Co., Ltd.  
Ningbo Branch Chemical Laboratory

Unless otherwise agreed in writing, this document is issued by the Company subject to its General Conditions of Service printed overleaf, available on request or accessible at <http://www.sgs.com/en/Terms-and-Conditions.aspx> and, for electronic format documents, subject to Terms and Conditions for Electronic Documents at <http://www.sgs.com/en/Terms-and-Conditions/Terms-e-Documents.aspx>. Attention is drawn to the limitation of liability, indemnification and jurisdiction issues defined therein. Any holder of this document is advised that information contained hereon reflects the Company's findings at the time of its intervention only and within the limits of Client's instructions, if any. The Company's sole responsibility is to its Client and this document does not exonerate parties to a transaction from exercising all their rights and obligations under the transaction documents. This document cannot be reproduced except in full, without prior written approval of the Company. Any unauthorized alteration, forgery or falsification of the content or appearance of this document is unlawful and offenders may be prosecuted to the fullest extent of the law. Unless otherwise stated the results shown in this test report refer only to the sample(s) tested.

Attention: To check the authenticity of testing /inspection report & certificate, please contact us at telephone: (86-755) 8307 1443, or email: [CN.Doccheck@sgs.com](mailto:CN.Doccheck@sgs.com)

15F West of Building 4, Lingyun Industry Park, No. 1177 Lingyun Road, Ningbo National Hi-Tech Zone, Ningbo, Zhejiang, China 315040 t E&E (86-574)89070249  
中国·浙江·宁波市国家高新区凌云路1177号凌云产业园4号楼西1-5层 邮编: 315040 t HL (86-574)89070271 t ML (86-574)89070242 e [sgs.china@sgs.com](mailto:sgs.china@sgs.com)

[www.sgs.com](http://www.sgs.com)



## Verification Report

No. NGBEC1801560001

Date: 03 May 2018

Page 25 of 46

(d) ▲=According to the declaration from the client, Lead (Pb) in No 2 is exempted by EU RoHS directive 2011/65/EU based on [ANNEX III 6(c)]: Copper alloy containing up to 4 % lead by weight.

(3) According to the declaration from applicant, the materials of other parts in Model mentioned in Tested Extended Model No. are the same as those in Model "MWFS518-3", and the results of Model "MWFS518-3" for support the results of other parts in mentioned in Tested Extended Model No.. The applicant will take the responsibility of all discrepancy and risk.



Unless otherwise agreed in writing, this document is issued by the Company subject to its General Conditions of Service printed overleaf, available on request or accessible at <http://www.sgs.com/en/Terms-and-Conditions.aspx> and, for electronic format documents, subject to Terms and Conditions for Electronic Documents at <http://www.sgs.com/en/Terms-and-Conditions/Terms-e-Documents.aspx>. Attention is drawn to the limitation of liability, indemnification and jurisdiction issues defined therein. Any holder of this document is advised that information contained hereon reflects the Company's findings at the time of its intervention only and within the limits of Client's instructions, if any. The Company's sole responsibility is to its Client and this document does not exonerate parties to a transaction from exercising all their rights and obligations under the transaction documents. This document cannot be reproduced except in full, without prior written approval of the Company. Any unauthorized alteration, forgery or falsification of the content or appearance of this document is unlawful and offenders may be prosecuted to the fullest extent of the law. Unless otherwise stated the results shown in this test report refer only to the sample(s) tested.

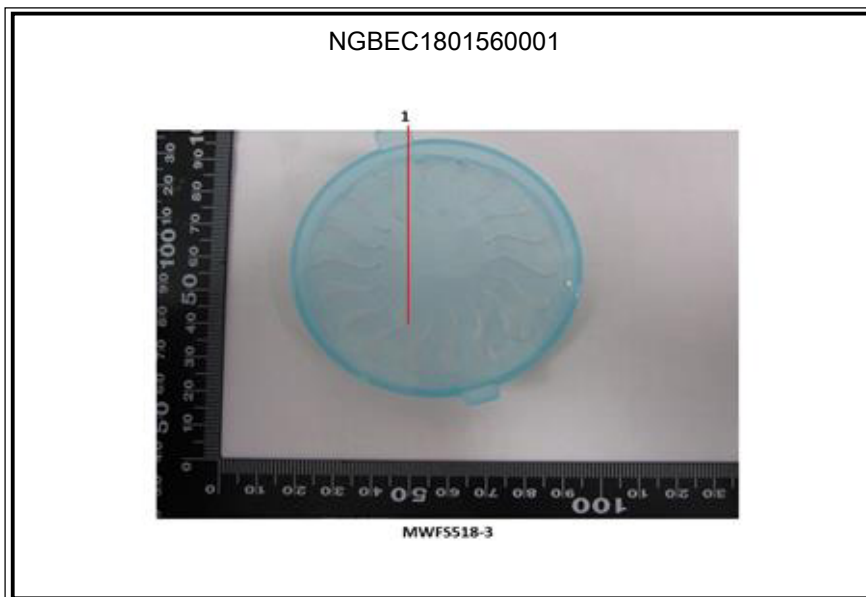
Attention: To check the authenticity of testing / inspection report & certificate, please contact us at telephone: (86-755) 8307 1443, or email: [CN.Doccheck@sgs.com](mailto:CN.Doccheck@sgs.com)

SGS-CSTC Technical Services Co., Ltd.  
Ningbo Branch Chemical Laboratory

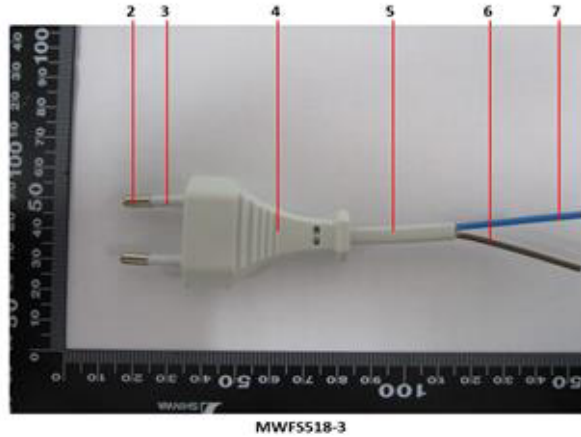
15F West of Building 4, Lingyun Industry Park, No. 1177 Lingyun Road, Ningbo National Hi-Tech Zone, Ningbo, Zhejiang, China 315040 t E&E (86-574)89070249  
中国·浙江·宁波市国家高新区凌云路1177号凌云产业园4号楼西1-5层 邮编: 315040 t HL (86-574)89070271 t ML (86-574)89070242 e [sgs.china@sgs.com](mailto:sgs.china@sgs.com)

[www.sgs.com](http://www.sgs.com)

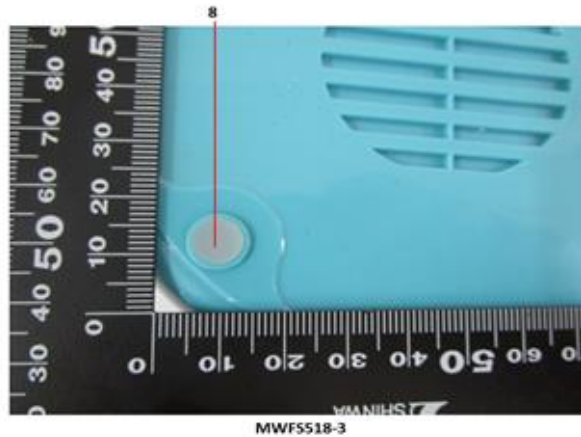
Sample photo:



NGBEC1801560001



NGBEC1801560001



SGS-CSTC (China) Technical Services Co., Ltd.  
Ningbo Branch Chemical Laboratory

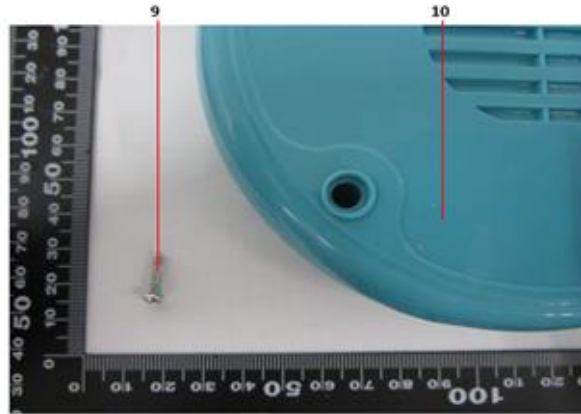
Unless otherwise agreed in writing, this document is issued by the Company subject to its General Conditions of Service printed overleaf, available on request or accessible at <http://www.sgs.com/en/Terms-and-Conditions.aspx> and, for electronic format documents, subject to Terms and Conditions for Electronic Documents at <http://www.sgs.com/en/Terms-and-Conditions/Terms-e-Documents.aspx>. Attention is drawn to the limitation of liability, indemnification and jurisdiction issues defined therein. Any holder of this document is advised that information contained hereon reflects the Company's findings at the time of its intervention only and within the limits of Client's instructions, if any. The Company's sole responsibility is to its Client and this document does not exonerate parties to a transaction from exercising all their rights and obligations under the transaction documents. This document cannot be reproduced except in full, without prior written approval of the Company. Any unauthorized alteration, forgery or falsification of the content or appearance of this document is unlawful and offenders may be prosecuted to the fullest extent of the law. Unless otherwise stated the results shown in this test report refer only to the sample(s) tested.

**Attention:** To check the authenticity of testing / inspection report & certificate, please contact us at telephone: (86-755) 8307 1443, or email: [CN.Doccheck@sgs.com](mailto:CN.Doccheck@sgs.com)

15F West of Building 4, Lingyun Industry Park, No. 1177 Lingyun Road, Ningbo National Hi-Tech Zone, Ningbo, Zhejiang, China 315040 t E&E (86-574)89070249  
中国·浙江·宁波市国家高新区凌云路1177号凌云产业园4号楼西1-5层 邮编: 315040 t HL (86-574)89070271 t ML (86-574)89070242 e [sgs.china@sgs.com](mailto:sgs.china@sgs.com)

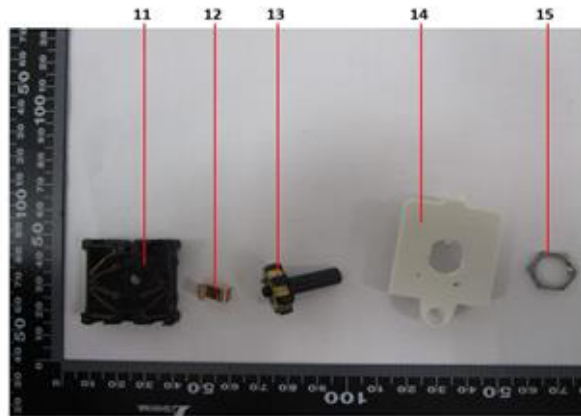
[www.sgs.com](http://www.sgs.com)

NGBEC1801560001



MWFS518-3

NGBEC1801560001



MWFS518-3



SGS-TESTING SERVICES  
Ningbo Branch Chemical Laboratory

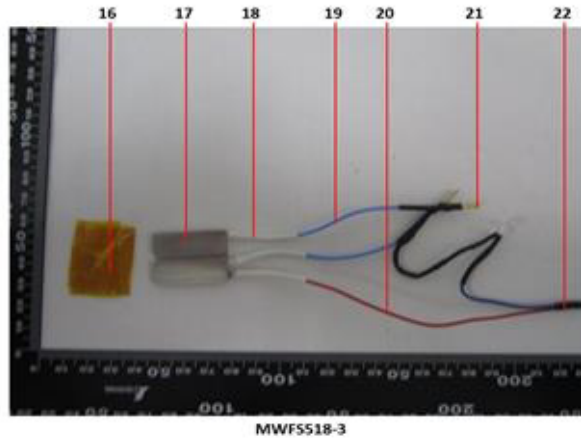
Unless otherwise agreed in writing, this document is issued by the Company subject to its General Conditions of Service printed overleaf, available on request or accessible at <http://www.sgs.com/en/Terms-and-Conditions.aspx> and, for electronic format documents, subject to Terms and Conditions for Electronic Documents at <http://www.sgs.com/en/Terms-and-Conditions/Terms-e-Document.aspx>. Attention is drawn to the limitation of liability, indemnification and jurisdiction issues defined therein. Any holder of this document is advised that information contained hereon reflects the Company's findings at the time of its intervention only and within the limits of Client's instructions, if any. The Company's sole responsibility is to its Client and this document does not exonerate parties to a transaction from exercising all their rights and obligations under the transaction documents. This document cannot be reproduced except in full, without prior written approval of the Company. Any unauthorized alteration, forgery or falsification of the content or appearance of this document is unlawful and offenders may be prosecuted to the fullest extent of the law. Unless otherwise stated the results shown in this test report refer only to the sample(s) tested.

Attention: To check the authenticity of testing / inspection report & certificate, please contact us at telephone: (86-755) 8307 1443, or email: [CN.Doccheck@sgs.com](mailto:CN.Doccheck@sgs.com)

15F West of Building 4, Lingyun Industry Park, No. 1177 Lingyun Road, Ningbo National Hi-Tech Zone, Ningbo, Zhejiang, China 315040 t E&E (86-574)89070249  
中国·浙江·宁波市国家高新区凌云路1177号凌云产业园4号楼西1-5层 邮编: 315040 t HL (86-574)89070271 t ML (86-574)89070242 e [sgs.china@sgs.com](mailto:sgs.china@sgs.com)

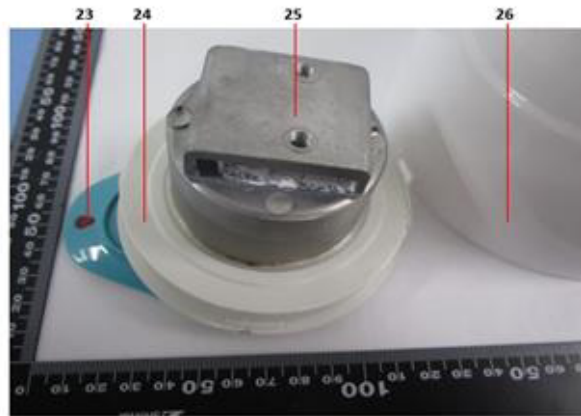
[www.sgs.com](http://www.sgs.com)

NGBEC1801560001



MWFS518-3

NGBEC1801560001



MWFS518-3



SGS-CTC (Shanghai) Technical Services Co., Ltd.  
Ningbo Branch Chemical Laboratory

Unless otherwise agreed in writing, this document is issued by the Company subject to its General Conditions of Service printed overleaf, available on request or accessible at <http://www.sgs.com/en/Terms-and-Conditions.aspx> and, for electronic format documents, subject to Terms and Conditions for Electronic Documents at <http://www.sgs.com/en/Terms-and-Conditions/Terms-e-Document.aspx>. Attention is drawn to the limitation of liability, indemnification and jurisdiction issues defined therein. Any holder of this document is advised that information contained hereon reflects the Company's findings at the time of its intervention only and within the limits of Client's instructions, if any. The Company's sole responsibility is to its Client and this document does not exonerate parties to a transaction from exercising all their rights and obligations under the transaction documents. This document cannot be reproduced except in full, without prior written approval of the Company. Any unauthorized alteration, forgery or falsification of the content or appearance of this document is unlawful and offenders may be prosecuted to the fullest extent of the law. Unless otherwise stated the results shown in this test report refer only to the sample(s) tested.

Attention: To check the authenticity of testing / inspection report & certificate, please contact us at telephone: (86-755) 8307 1443, or email: [CN.Doccheck@sgs.com](mailto:CN.Doccheck@sgs.com)

15F West of Building 4, Lingyun Industry Park, No. 1177 Lingyun Road, Ningbo National Hi-Tech Zone, Ningbo, Zhejiang, China 315040 t E&E (86-574)89070249  
中国·浙江·宁波市国家高新区凌云路1177号凌云产业园4号楼西1-5层 邮编: 315040 t HL (86-574)89070271 t ML (86-574)89070242 e [sgs.china@sgs.com](mailto:sgs.china@sgs.com)

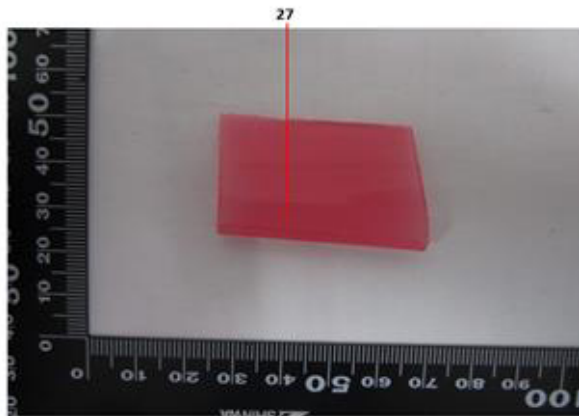
[www.sgs.com](http://www.sgs.com)

NGBEC1801560001



MWF5511

NGBEC1801560001



MWF5511



SGS-CTC (Shanghai) Technical Services Co., Ltd.  
Ningbo Branch Chemical Laboratory

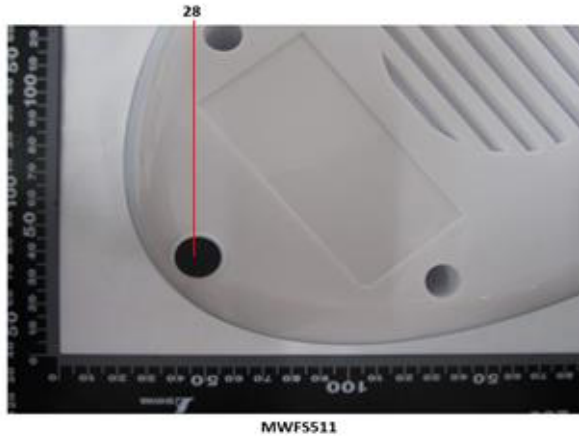
Unless otherwise agreed in writing, this document is issued by the Company subject to its General Conditions of Service printed overleaf, available on request or accessible at <http://www.sgs.com/en/Terms-and-Conditions.aspx> and, for electronic format documents, subject to Terms and Conditions for Electronic Documents at <http://www.sgs.com/en/Terms-and-Conditions/Terms-e-Document.aspx>. Attention is drawn to the limitation of liability, indemnification and jurisdiction issues defined therein. Any holder of this document is advised that information contained hereon reflects the Company's findings at the time of its intervention only and within the limits of Client's instructions, if any. The Company's sole responsibility is to its Client and this document does not exonerate parties to a transaction from exercising all their rights and obligations under the transaction documents. This document cannot be reproduced except in full, without prior written approval of the Company. Any unauthorized alteration, forgery or falsification of the content or appearance of this document is unlawful and offenders may be prosecuted to the fullest extent of the law. Unless otherwise stated the results shown in this test report refer only to the sample(s) tested.

Attention: To check the authenticity of testing / inspection report & certificate, please contact us at telephone: (86-755) 8307 1443, or email: [CN.Doccheck@sgs.com](mailto:CN.Doccheck@sgs.com)

15F West of Building 4, Lingyun Industry Park, No. 1177 Lingyun Road, Ningbo National Hi-Tech Zone, Ningbo, Zhejiang, China 315040 t E&E (86-574)89070249  
中国·浙江·宁波市国家高新区凌云路1177号凌云产业园4号楼西1-5层 邮编: 315040 t HL (86-574)89070271 t ML (86-574)89070242 e [sgs.china@sgs.com](mailto:sgs.china@sgs.com)

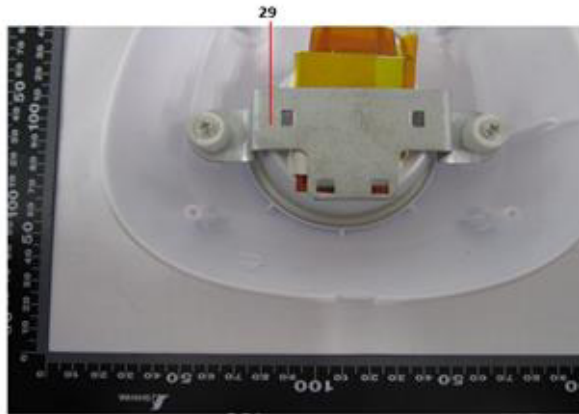
[www.sgs.com](http://www.sgs.com)

NGBEC1801560001



MWF5511

NGBEC1801560001



MWF5511



SGS-CSTC (China) Technical Services Co., Ltd.  
Ningbo Branch Chemical Laboratory

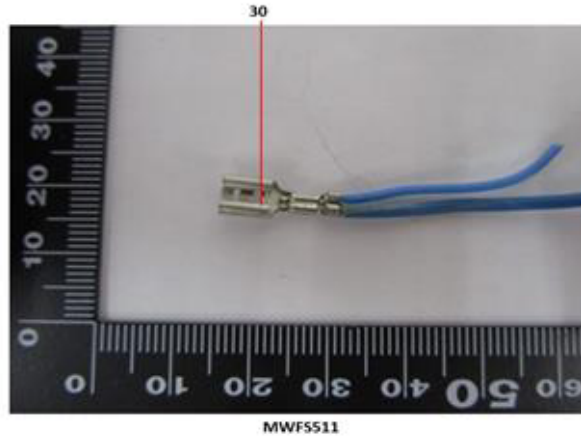
Unless otherwise agreed in writing, this document is issued by the Company subject to its General Conditions of Service printed overleaf, available on request or accessible at <http://www.sgs.com/en/Terms-and-Conditions.aspx> and, for electronic format documents, subject to Terms and Conditions for Electronic Documents at <http://www.sgs.com/en/Terms-and-Conditions/Terms-e-Documents.aspx>. Attention is drawn to the limitation of liability, indemnification and jurisdiction issues defined therein. Any holder of this document is advised that information contained hereon reflects the Company's findings at the time of its intervention only and within the limits of Client's instructions, if any. The Company's sole responsibility is to its Client and this document does not exonerate parties to a transaction from exercising all their rights and obligations under the transaction documents. This document cannot be reproduced except in full, without prior written approval of the Company. Any unauthorized alteration, forgery or falsification of the content or appearance of this document is unlawful and offenders may be prosecuted to the fullest extent of the law. Unless otherwise stated the results shown in this test report refer only to the sample(s) tested.

**Attention:** To check the authenticity of testing / inspection report & certificate, please contact us at telephone: (86-755) 8307 1443, or email: [CN.Doccheck@sgs.com](mailto:CN.Doccheck@sgs.com)

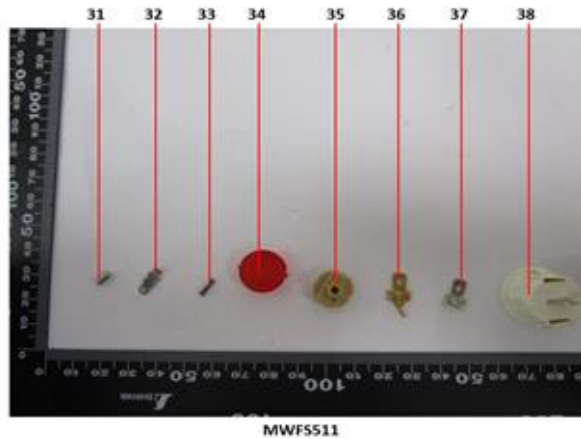
15F West of Building 4, Lingyun Industry Park, No. 1177 Lingyun Road, Ningbo National Hi-Tech Zone, Ningbo, Zhejiang, China 315040 t E&E (86-574)89070249  
中国·浙江·宁波市国家高新区凌云路1177号凌云产业园4号楼西1-5层 邮编: 315040 t HL (86-574)89070271 t ML (86-574)89070242 e [sgs.china@sgs.com](mailto:sgs.china@sgs.com)

[www.sgs.com](http://www.sgs.com)

NGBEC1801560001



NGBEC1801560001



SGS-CSTC (China) Technical Services Co., Ltd.  
Ningbo Branch Chemical Laboratory

Unless otherwise agreed in writing, this document is issued by the Company subject to its General Conditions of Service printed overleaf, available on request or accessible at <http://www.sgs.com/en/Terms-and-Conditions.aspx> and, for electronic format documents, subject to Terms and Conditions for Electronic Documents at <http://www.sgs.com/en/Terms-and-Conditions/Terms-e-Document.aspx>. Attention is drawn to the limitation of liability, indemnification and jurisdiction issues defined therein. Any holder of this document is advised that information contained hereon reflects the Company's findings at the time of its intervention only and within the limits of Client's instructions, if any. The Company's sole responsibility is to its Client and this document does not exonerate parties to a transaction from exercising all their rights and obligations under the transaction documents. This document cannot be reproduced except in full, without prior written approval of the Company. Any unauthorized alteration, forgery or falsification of the content or appearance of this document is unlawful and offenders may be prosecuted to the fullest extent of the law. Unless otherwise stated the results shown in this test report refer only to the sample(s) tested.

Attention: To check the authenticity of testing / inspection report & certificate, please contact us at telephone: (86-755) 8307 1443, or email: [CN.Doccheck@sgs.com](mailto:CN.Doccheck@sgs.com)

1-5F West of Building 4, Lingyun Industry Park, No. 1177 Lingyun Road, Ningbo National Hi-Tech Zone, Ningbo, Zhejiang, China 315040 t E&E (86-574)89070249  
中国·浙江·宁波市国家高新区凌云路1177号凌云产业园4号楼西1-5层 邮编: 315040 t HL (86-574)89070271 t ML (86-574)89070242 e [sgs.china@sgs.com](mailto:sgs.china@sgs.com)

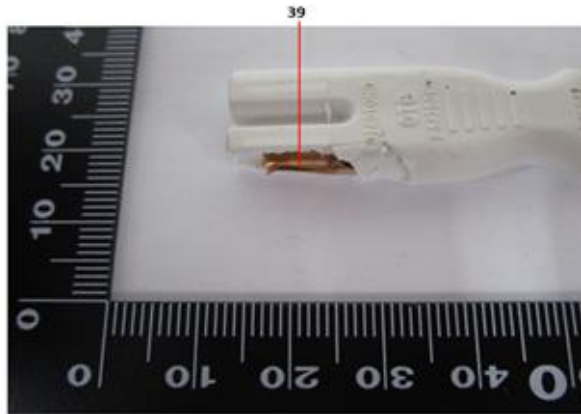
[www.sgs.com](http://www.sgs.com)

NGBEC1801560001



MWF5512

NGBEC1801560001



MWF5512



SGS-CSTC (Shanghai) Technical Services Co., Ltd.  
Ningbo Branch Chemical Laboratory

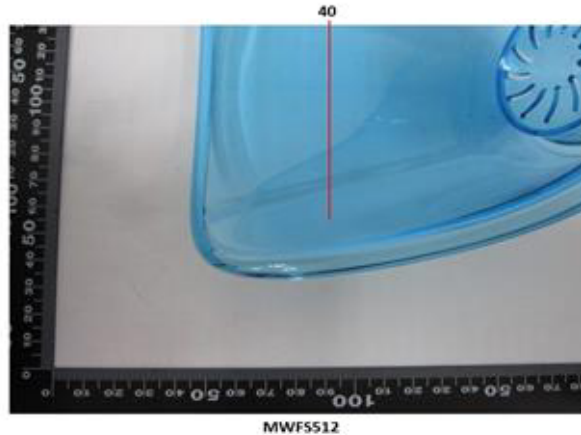
Unless otherwise agreed in writing, this document is issued by the Company subject to its General Conditions of Service printed overleaf, available on request or accessible at <http://www.sgs.com/en/Terms-and-Conditions.aspx> and, for electronic format documents, subject to Terms and Conditions for Electronic Documents at <http://www.sgs.com/en/Terms-and-Conditions/Terms-e-Documents.aspx>. Attention is drawn to the limitation of liability, indemnification and jurisdiction issues defined therein. Any holder of this document is advised that information contained hereon reflects the Company's findings at the time of its intervention only and within the limits of Client's instructions, if any. The Company's sole responsibility is to its Client and this document does not exonerate parties to a transaction from exercising all their rights and obligations under the transaction documents. This document cannot be reproduced except in full, without prior written approval of the Company. Any unauthorized alteration, forgery or falsification of the content or appearance of this document is unlawful and offenders may be prosecuted to the fullest extent of the law. Unless otherwise stated the results shown in this test report refer only to the sample(s) tested.

Attention: To check the authenticity of testing / inspection report & certificate, please contact us at telephone: (86-755) 8307 1443, or email: [CN.Doccheck@sgs.com](mailto:CN.Doccheck@sgs.com)

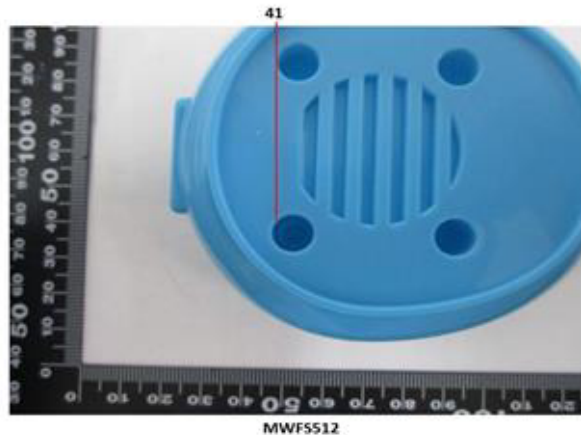
1-5F West of Building 4, Lingyun Industry Park, No. 1177 Lingyun Road, Ningbo National Hi-Tech Zone, Ningbo, Zhejiang, China 315040 t E&E (86-574)89070249  
中国·浙江·宁波市国家高新区凌云路1177号凌云产业园4号楼西1-5层 邮编: 315040 t HL (86-574)89070271 t ML (86-574)89070242 e [sgs.china@sgs.com](mailto:sgs.china@sgs.com)

[www.sgs.com](http://www.sgs.com)

NGBEC1801560001



NGBEC1801560001



SGS-CSTC 标准技术服务股份有限公司 宁波分公司  
Ningbo Branch Chemical Laboratory

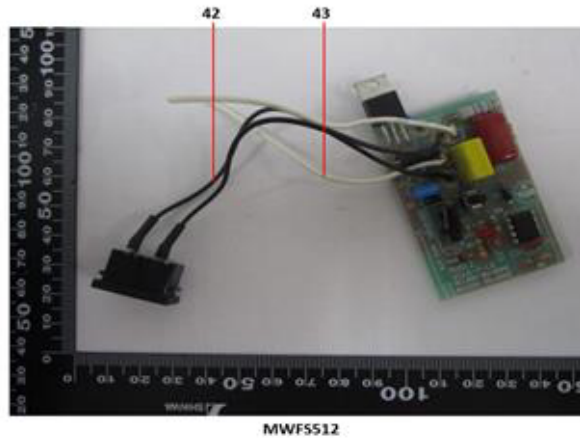
Unless otherwise agreed in writing, this document is issued by the Company subject to its General Conditions of Service printed overleaf, available on request or accessible at <http://www.sgs.com/en/Terms-and-Conditions.aspx> and, for electronic format documents, subject to Terms and Conditions for Electronic Documents at <http://www.sgs.com/en/Terms-and-Conditions/Terms-e-Document.aspx>. Attention is drawn to the limitation of liability, indemnification and jurisdiction issues defined therein. Any holder of this document is advised that information contained hereon reflects the Company's findings at the time of its intervention only and within the limits of Client's instructions, if any. The Company's sole responsibility is to its Client and this document does not exonerate parties to a transaction from exercising all their rights and obligations under the transaction documents. This document cannot be reproduced except in full, without prior written approval of the Company. Any unauthorized alteration, forgery or falsification of the content or appearance of this document is unlawful and offenders may be prosecuted to the fullest extent of the law. Unless otherwise stated the results shown in this test report refer only to the sample(s) tested.

**Attention:** To check the authenticity of testing / inspection report & certificate, please contact us at telephone: (86-755) 8307 1443, or email: [CN.Doccheck@sgs.com](mailto:CN.Doccheck@sgs.com)

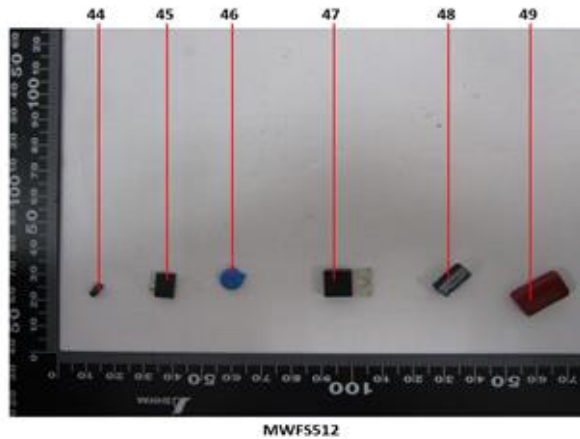
15F West of Building 4, Lingyun Industry Park, No. 1177 Lingyun Road, Ningbo National Hi-Tech Zone, Ningbo, Zhejiang, China 315040 t E&E (86-574)89070249  
中国·浙江·宁波市国家高新区凌云路1177号凌云产业园4号楼西1-5层 邮编: 315040 t HL (86-574)89070271 t ML (86-574)89070242 e [sgs.china@sgs.com](mailto:sgs.china@sgs.com)

[www.sgs.com](http://www.sgs.com)

NGBEC1801560001



NGBEC1801560001



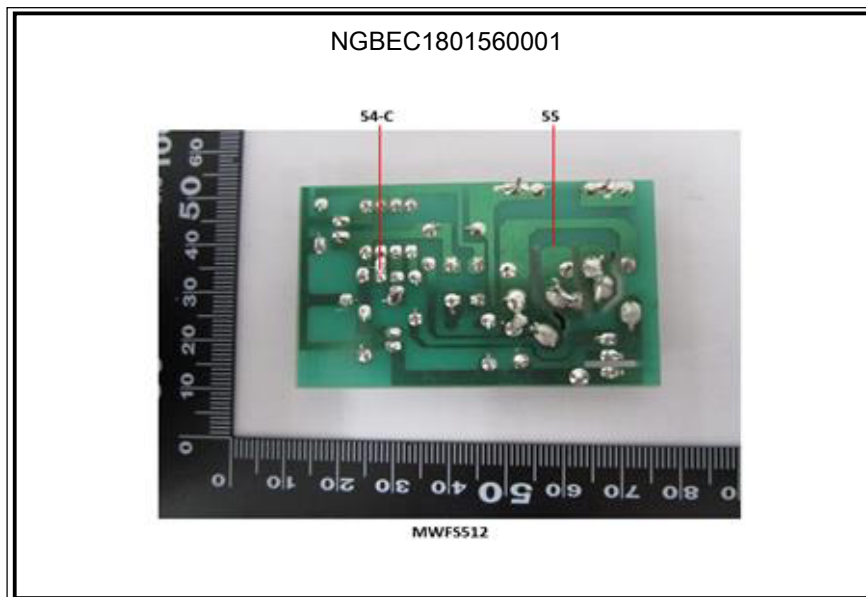
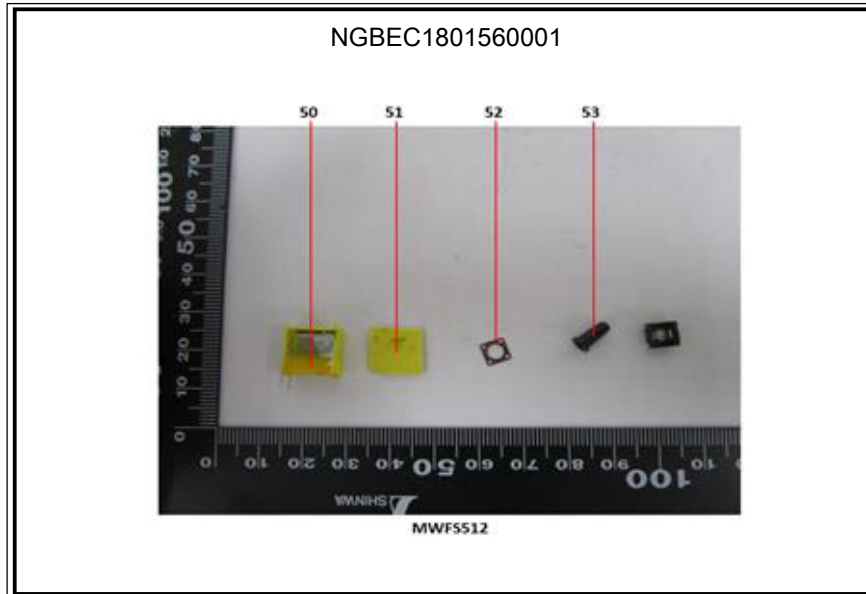
SGS-CTC (Shanghai) Technical Services Co., Ltd.  
Ningbo Branch

Unless otherwise agreed in writing, this document is issued by the Company subject to its General Conditions of Service printed overleaf, available on request or accessible at <http://www.sgs.com/en/Terms-and-Conditions.aspx> and, for electronic format documents, subject to Terms and Conditions for Electronic Documents at <http://www.sgs.com/en/Terms-and-Conditions/Terms-e-Document.aspx>. Attention is drawn to the limitation of liability, indemnification and jurisdiction issues defined therein. Any holder of this document is advised that information contained hereon reflects the Company's findings at the time of its intervention only and within the limits of Client's instructions, if any. The Company's sole responsibility is to its Client and this document does not exonerate parties to a transaction from exercising all their rights and obligations under the transaction documents. This document cannot be reproduced except in full, without prior written approval of the Company. Any unauthorized alteration, forgery or falsification of the content or appearance of this document is unlawful and offenders may be prosecuted to the fullest extent of the law. Unless otherwise stated the results shown in this test report refer only to the sample(s) tested.

Attention: To check the authenticity of testing / inspection report & certificate, please contact us at telephone: (86-755) 8307 1443, or email: [CN.Doccheck@sgs.com](mailto:CN.Doccheck@sgs.com)

1-5F West of Building 4, Lingyun Industry Park, No. 1177 Lingyun Road, Ningbo National Hi-Tech Zone, Ningbo, Zhejiang, China 315040 t E&E (86-574)89070249  
中国·浙江·宁波市国家高新区凌云路1177号凌云产业园4号楼西1-5层 邮编: 315040 t HL (86-574)89070271 t ML (86-574)89070242 e [sgs.china@sgs.com](mailto:sgs.china@sgs.com)

[www.sgs.com](http://www.sgs.com)



Unless otherwise agreed in writing, this document is issued by the Company subject to its General Conditions of Service printed overleaf, available on request or accessible at <http://www.sgs.com/en/Terms-and-Conditions.aspx> and, for electronic format documents, subject to Terms and Conditions for Electronic Documents at <http://www.sgs.com/en/Terms-and-Conditions/Terms-e-Document.aspx>. Attention is drawn to the limitation of liability, indemnification and jurisdiction issues defined therein. Any holder of this document is advised that information contained hereon reflects the Company's findings at the time of its intervention only and within the limits of Client's instructions, if any. The Company's sole responsibility is to its Client and this document does not exonerate parties to a transaction from exercising all their rights and obligations under the transaction documents. This document cannot be reproduced except in full, without prior written approval of the Company. Any unauthorized alteration, forgery or falsification of the content or appearance of this document is unlawful and offenders may be prosecuted to the fullest extent of the law. Unless otherwise stated the results shown in this test report refer only to the sample(s) tested.

**Attention:** To check the authenticity of testing / inspection report & certificate, please contact us at telephone: (86-755) 8307 1443, or email: [CN.Doccheck@sgs.com](mailto:CN.Doccheck@sgs.com)

SGS-TESTING SERVICES  
Ningbo Branch Chemical Laboratory

15F West of Building 4, Lingyun Industry Park, No. 1177 Lingyun Road, Ningbo National Hi-Tech Zone, Ningbo, Zhejiang, China 315040  
中国·浙江·宁波市国家高新区凌云路1177号凌云产业园4号楼西1-5层

[www.sgs.com](http://www.sgs.com)

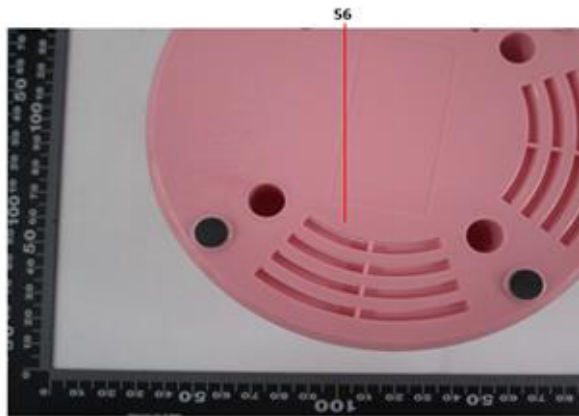
1E&E (86-574)89070249  
t HL (86-574)89070271 t ML (86-574)89070242 e [sgs.china@sgs.com](mailto:sgs.china@sgs.com)

NGBEC1801560001



MWF5516

NGBEC1801560001



MWF5516



SGS-CTC (China) Technical Services Co., Ltd.  
Ningbo Branch Chemical Laboratory

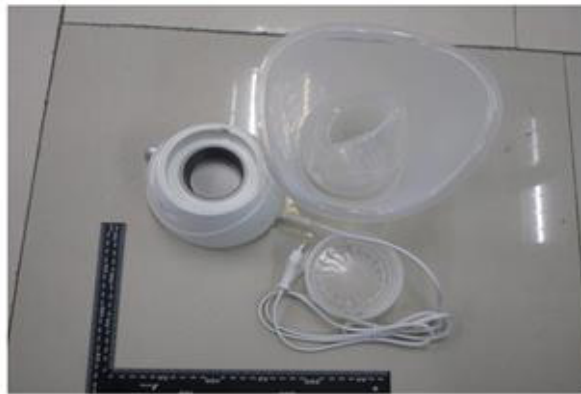
Unless otherwise agreed in writing, this document is issued by the Company subject to its General Conditions of Service printed overleaf, available on request or accessible at <http://www.sgs.com/en/Terms-and-Conditions.aspx> and, for electronic format documents, subject to Terms and Conditions for Electronic Documents at <http://www.sgs.com/en/Terms-and-Conditions/Terms-e-Document.aspx>. Attention is drawn to the limitation of liability, indemnification and jurisdiction issues defined therein. Any holder of this document is advised that information contained hereon reflects the Company's findings at the time of its intervention only and within the limits of Client's instructions, if any. The Company's sole responsibility is to its Client and this document does not exonerate parties to a transaction from exercising all their rights and obligations under the transaction documents. This document cannot be reproduced except in full, without prior written approval of the Company. Any unauthorized alteration, forgery or falsification of the content or appearance of this document is unlawful and offenders may be prosecuted to the fullest extent of the law. Unless otherwise stated the results shown in this test report refer only to the sample(s) tested.

Attention: To check the authenticity of testing / inspection report & certificate, please contact us at telephone: (86-755) 8307 1443, or email: [CN.Doccheck@sgs.com](mailto:CN.Doccheck@sgs.com)

15F West of Building 4, Lingyun Industry Park, No. 1177 Lingyun Road, Ningbo National Hi-Tech Zone, Ningbo, Zhejiang, China 315040 t E&E (86-574)89070249  
中国·浙江·宁波市国家高新区凌云路1177号凌云产业园4号楼西1-5层 邮编: 315040 t HL (86-574)89070271 t ML (86-574)89070242 e [sgs.china@sgs.com](mailto:sgs.china@sgs.com)

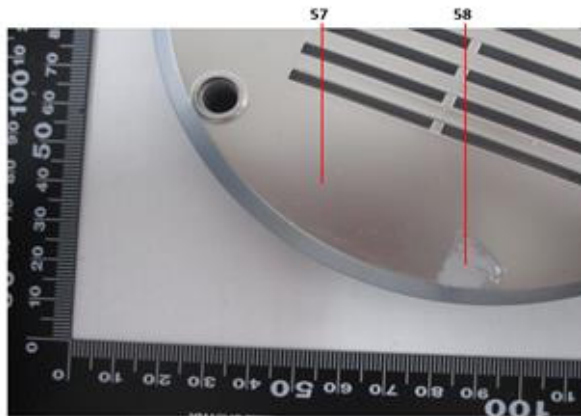
[www.sgs.com](http://www.sgs.com)

NGBEC1801560001



MWF5518

NGBEC1801560001



MWF5518



SGS-CSTC (Shanghai) Technical Services Co., Ltd.  
Ningbo Branch Chemical Laboratory

Unless otherwise agreed in writing, this document is issued by the Company subject to its General Conditions of Service printed overleaf, available on request or accessible at <http://www.sgs.com/en/Terms-and-Conditions.aspx> and, for electronic format documents, subject to Terms and Conditions for Electronic Documents at <http://www.sgs.com/en/Terms-and-Conditions/Terms-e-Document.aspx>. Attention is drawn to the limitation of liability, indemnification and jurisdiction issues defined therein. Any holder of this document is advised that information contained hereon reflects the Company's findings at the time of its intervention only and within the limits of Client's instructions, if any. The Company's sole responsibility is to its Client and this document does not exonerate parties to a transaction from exercising all their rights and obligations under the transaction documents. This document cannot be reproduced except in full, without prior written approval of the Company. Any unauthorized alteration, forgery or falsification of the content or appearance of this document is unlawful and offenders may be prosecuted to the fullest extent of the law. Unless otherwise stated the results shown in this test report refer only to the sample(s) tested.

Attention: To check the authenticity of testing / inspection report & certificate, please contact us at telephone: (86-755) 8307 1443, or email: [CN.Doccheck@sgs.com](mailto:CN.Doccheck@sgs.com)

15F West of Building 4, Lingyun Industry Park, No. 1177 Lingyun Road, Ningbo National Hi-Tech Zone, Ningbo, Zhejiang, China 315040 t E&E (86-574)89070249  
中国·浙江·宁波市国家高新区凌云路1177号凌云产业园4号楼西1-5层 邮编: 315040 t HL (86-574)89070271 t ML (86-574)89070242 e [sgs.china@sgs.com](mailto:sgs.china@sgs.com)

[www.sgs.com](http://www.sgs.com)

NGBEC1801560001



MWFS518-1

NGBEC1801560001



MWFS518-1



SGS-CSTC 宁波分公司  
Ningbo Branch Chemical Laboratory

Unless otherwise agreed in writing, this document is issued by the Company subject to its General Conditions of Service printed overleaf, available on request or accessible at <http://www.sgs.com/en/Terms-and-Conditions.aspx> and, for electronic format documents, subject to Terms and Conditions for Electronic Documents at <http://www.sgs.com/en/Terms-and-Conditions/Terms-e-Document.aspx>. Attention is drawn to the limitation of liability, indemnification and jurisdiction issues defined therein. Any holder of this document is advised that information contained hereon reflects the Company's findings at the time of its intervention only and within the limits of Client's instructions, if any. The Company's sole responsibility is to its Client and this document does not exonerate parties to a transaction from exercising all their rights and obligations under the transaction documents. This document cannot be reproduced except in full, without prior written approval of the Company. Any unauthorized alteration, forgery or falsification of the content or appearance of this document is unlawful and offenders may be prosecuted to the fullest extent of the law. Unless otherwise stated the results shown in this test report refer only to the sample(s) tested.

Attention: To check the authenticity of testing / inspection report & certificate, please contact us at telephone: (86-755) 8307 1443, or email: [CN.Doccheck@sgs.com](mailto:CN.Doccheck@sgs.com)

15F West of Building 4, Lingyun Industry Park, No. 1177 Lingyun Road, Ningbo National Hi-Tech Zone, Ningbo, Zhejiang, China 315040 t E&E (86-574)89070249  
中国·浙江·宁波市国家高新区凌云路1177号凌云产业园4号楼西1-5层 邮编: 315040 t HL (86-574)89070271 t ML (86-574)89070242 e [sgs.china@sgs.com](mailto:sgs.china@sgs.com)

[www.sgs.com](http://www.sgs.com)

NGBEC1801560001



MWFS518-2

NGBEC1801560001



MWFS518-2



Unless otherwise agreed in writing, this document is issued by the Company subject to its General Conditions of Service printed overleaf, available on request or accessible at <http://www.sgs.com/en/Terms-and-Conditions.aspx> and, for electronic format documents, subject to Terms and Conditions for Electronic Documents at <http://www.sgs.com/en/Terms-and-Conditions/Terms-e-Document.aspx>. Attention is drawn to the limitation of liability, indemnification and jurisdiction issues defined therein. Any holder of this document is advised that information contained hereon reflects the Company's findings at the time of its intervention only and within the limits of Client's instructions, if any. The Company's sole responsibility is to its Client and this document does not exonerate parties to a transaction from exercising all their rights and obligations under the transaction documents. This document cannot be reproduced except in full, without prior written approval of the Company. Any unauthorized alteration, forgery or falsification of the content or appearance of this document is unlawful and offenders may be prosecuted to the fullest extent of the law. Unless otherwise stated the results shown in this test report refer only to the sample(s) tested.

**Attention:** To check the authenticity of testing / inspection report & certificate, please contact us at telephone: (86-755) 8307 1443, or email: [CN.Doccheck@sgs.com](mailto:CN.Doccheck@sgs.com)

SGS-CSTC (China) Technical Services Co., Ltd.  
Ningbo Branch Chemical Laboratory

15F West of Building 4, Lingyun Industry Park, No. 1177 Lingyun Road, Ningbo National Hi-Tech Zone, Ningbo, Zhejiang, China 315040 t E&E (86-574)89070249  
中国·浙江·宁波市国家高新区凌云路1177号凌云产业园4号楼西1-5层 邮编: 315040 t HL (86-574)89070271 t ML (86-574)89070242 e [sgs.china@sgs.com](mailto:sgs.china@sgs.com)

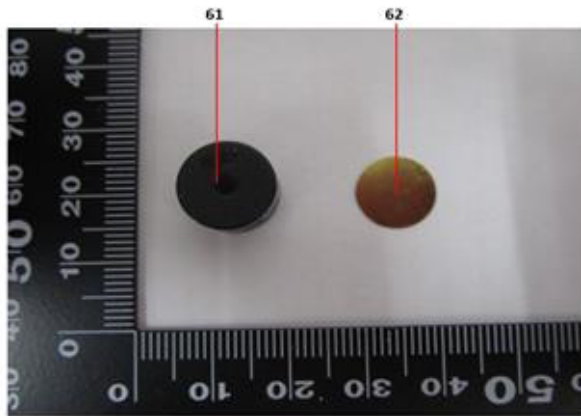
[www.sgs.com](http://www.sgs.com)

NGBEC1801560001



MWFS519-A

NGBEC1801560001



MWFS519-A



SGS-CSTC (Shanghai) Technical Services Co., Ltd.  
Ningbo Branch Chemical Laboratory

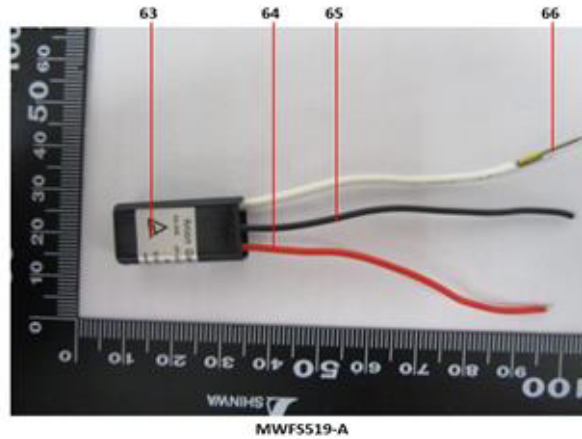
Unless otherwise agreed in writing, this document is issued by the Company subject to its General Conditions of Service printed overleaf, available on request or accessible at <http://www.sgs.com/en/Terms-and-Conditions.aspx> and, for electronic format documents, subject to Terms and Conditions for Electronic Documents at <http://www.sgs.com/en/Terms-and-Conditions/Terms-e-Document.aspx>. Attention is drawn to the limitation of liability, indemnification and jurisdiction issues defined therein. Any holder of this document is advised that information contained hereon reflects the Company's findings at the time of its intervention only and within the limits of Client's instructions, if any. The Company's sole responsibility is to its Client and this document does not exonerate parties to a transaction from exercising all their rights and obligations under the transaction documents. This document cannot be reproduced except in full, without prior written approval of the Company. Any unauthorized alteration, forgery or falsification of the content or appearance of this document is unlawful and offenders may be prosecuted to the fullest extent of the law. Unless otherwise stated the results shown in this test report refer only to the sample(s) tested.

Attention: To check the authenticity of testing / inspection report & certificate, please contact us at telephone: (86-755) 8307 1443, or email: [CN.Doccheck@sgs.com](mailto:CN.Doccheck@sgs.com)

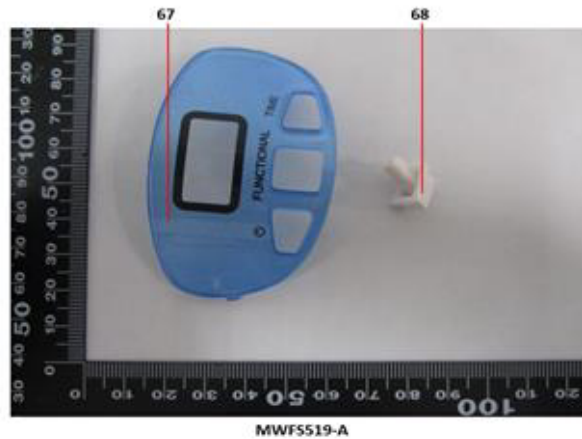
15F West of Building 4, Lingyun Industry Park, No. 1177 Lingyun Road, Ningbo National Hi-Tech Zone, Ningbo, Zhejiang, China 315040 t E&E (86-574)89070249  
中国·浙江·宁波市国家高新区凌云路1177号凌云产业园4号楼西1-5层 邮编: 315040 t HL (86-574)89070271 t ML (86-574)89070242 e [sgs.china@sgs.com](mailto:sgs.china@sgs.com)

[www.sgs.com](http://www.sgs.com)

NGBEC1801560001



NGBEC1801560001



SGS-CSTC (Shanghai) Technical Services Co., Ltd.  
Ningbo Branch Chemical Laboratory

Unless otherwise agreed in writing, this document is issued by the Company subject to its General Conditions of Service printed overleaf, available on request or accessible at <http://www.sgs.com/en/Terms-and-Conditions.aspx> and, for electronic format documents, subject to Terms and Conditions for Electronic Documents at <http://www.sgs.com/en/Terms-and-Conditions/Terms-e-Document.aspx>. Attention is drawn to the limitation of liability, indemnification and jurisdiction issues defined therein. Any holder of this document is advised that information contained hereon reflects the Company's findings at the time of its intervention only and within the limits of Client's instructions, if any. The Company's sole responsibility is to its Client and this document does not exonerate parties to a transaction from exercising all their rights and obligations under the transaction documents. This document cannot be reproduced except in full, without prior written approval of the Company. Any unauthorized alteration, forgery or falsification of the content or appearance of this document is unlawful and offenders may be prosecuted to the fullest extent of the law. Unless otherwise stated the results shown in this test report refer only to the sample(s) tested.

Attention: To check the authenticity of testing / inspection report & certificate, please contact us at telephone: (86-755) 8307 1443, or email: [CN.Doccheck@sgs.com](mailto:CN.Doccheck@sgs.com)

1-5F West of Building 4, Lingyun Industry Park, No. 1177 Lingyun Road, Ningbo National Hi-Tech Zone, Ningbo, Zhejiang, China 315040 t E&E (86-574)89070249  
中国·浙江·宁波市国家高新区凌云路1177号凌云产业园4号楼西1-5层 邮编: 315040 t HL (86-574)89070271 t ML (86-574)89070242 e [sgs.china@sgs.com](mailto:sgs.china@sgs.com)

[www.sgs.com](http://www.sgs.com)

NGBEC1801560001



MWFS519-B

NGBEC1801560001



MWFS519-B



SGS-CSTC (China) Technical Services Co., Ltd.  
Ningbo Branch Chemical Laboratory

Unless otherwise agreed in writing, this document is issued by the Company subject to its General Conditions of Service printed overleaf, available on request or accessible at <http://www.sgs.com/en/Terms-and-Conditions.aspx> and, for electronic format documents, subject to Terms and Conditions for Electronic Documents at <http://www.sgs.com/en/Terms-and-Conditions/Terms-e-Document.aspx>. Attention is drawn to the limitation of liability, indemnification and jurisdiction issues defined therein. Any holder of this document is advised that information contained hereon reflects the Company's findings at the time of its intervention only and within the limits of Client's instructions, if any. The Company's sole responsibility is to its Client and this document does not exonerate parties to a transaction from exercising all their rights and obligations under the transaction documents. This document cannot be reproduced except in full, without prior written approval of the Company. Any unauthorized alteration, forgery or falsification of the content or appearance of this document is unlawful and offenders may be prosecuted to the fullest extent of the law. Unless otherwise stated the results shown in this test report refer only to the sample(s) tested.

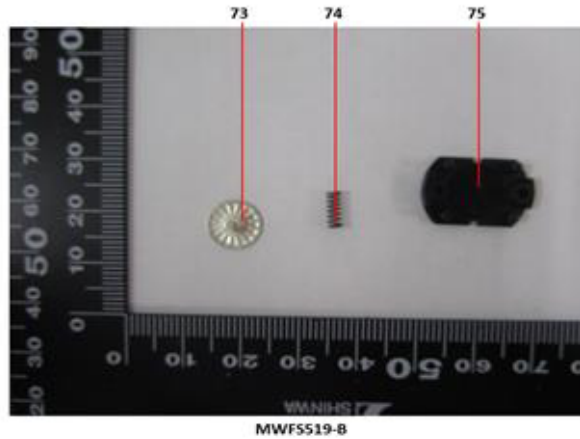
**Attention:** To check the authenticity of testing / inspection report & certificate, please contact us at telephone: (86-755) 8307 1443, or email: [CN.Doccheck@sgs.com](mailto:CN.Doccheck@sgs.com)

1-5F West of Building 4, Lingyun Industry Park, No. 1177 Lingyun Road, Ningbo National Hi-Tech Zone, Ningbo, Zhejiang, China 315040 t E&E (86-574)89070249  
中国·浙江·宁波市国家高新区凌云路1177号凌云产业园4号楼西1-5层 邮编: 315040 t HL (86-574)89070271 t ML (86-574)89070242 e [sgs.china@sgs.com](mailto:sgs.china@sgs.com)

[www.sgs.com](http://www.sgs.com)



NGBEC1801560001



MWFS519-B

NGBEC1801560001



MWFS519-C



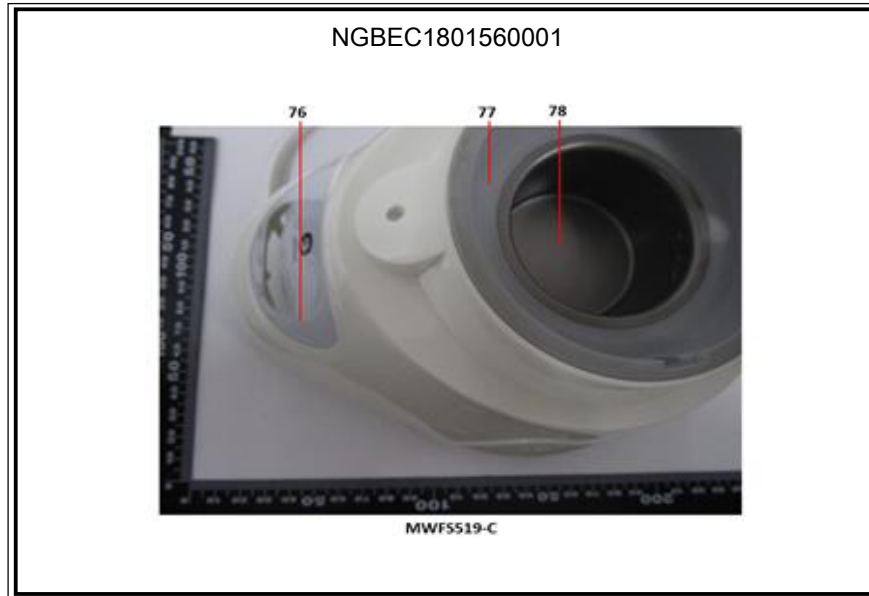
SGS-TESTING SERVICES  
Ningbo Branch Chemical Laboratory

Unless otherwise agreed in writing, this document is issued by the Company subject to its General Conditions of Service printed overleaf, available on request or accessible at <http://www.sgs.com/en/Terms-and-Conditions.aspx> and, for electronic format documents, subject to Terms and Conditions for Electronic Documents at <http://www.sgs.com/en/Terms-and-Conditions/Terms-e-Document.aspx>. Attention is drawn to the limitation of liability, indemnification and jurisdiction issues defined therein. Any holder of this document is advised that information contained hereon reflects the Company's findings at the time of its intervention only and within the limits of Client's instructions, if any. The Company's sole responsibility is to its Client and this document does not exonerate parties to a transaction from exercising all their rights and obligations under the transaction documents. This document cannot be reproduced except in full, without prior written approval of the Company. Any unauthorized alteration, forgery or falsification of the content or appearance of this document is unlawful and offenders may be prosecuted to the fullest extent of the law. Unless otherwise stated the results shown in this test report refer only to the sample(s) tested.

Attention: To check the authenticity of testing / inspection report & certificate, please contact us at telephone: (86-755) 8307 1443, or email: [CN.Doccheck@sgs.com](mailto:CN.Doccheck@sgs.com)

15F West of Building 4, Lingyun Industry Park, No. 1177 Lingyun Road, Ningbo National Hi-Tech Zone, Ningbo, Zhejiang, China 315040 t E&E (86-574)89070249  
中国·浙江·宁波市国家高新区凌云路1177号凌云产业园4号楼西1-5层 邮编: 315040 t HL (86-574)89070271 t ML (86-574)89070242 e [sgs.china@sgs.com](mailto:sgs.china@sgs.com)

[www.sgs.com](http://www.sgs.com)



SGS authenticate the photo on original report only

\*\*\* End of Report \*\*\*



SGS-CSTC (China) Technical Services Co., Ltd.  
Ningbo Branch Chemical Laboratory

Unless otherwise agreed in writing, this document is issued by the Company subject to its General Conditions of Service printed overleaf, available on request or accessible at <http://www.sgs.com/en/Terms-and-Conditions.aspx> and, for electronic format documents, subject to Terms and Conditions for Electronic Documents at <http://www.sgs.com/en/Terms-and-Conditions/Terms-e-Documents.aspx>. Attention is drawn to the limitation of liability, indemnification and jurisdiction issues defined therein. Any holder of this document is advised that information contained hereon reflects the Company's findings at the time of its intervention only and within the limits of Client's instructions, if any. The Company's sole responsibility is to its Client and this document does not exonerate parties to a transaction from exercising all their rights and obligations under the transaction documents. This document cannot be reproduced except in full, without prior written approval of the Company. Any unauthorized alteration, forgery or falsification of the content or appearance of this document is unlawful and offenders may be prosecuted to the fullest extent of the law. Unless otherwise stated the results shown in this test report refer only to the sample(s) tested.

**Attention:** To check the authenticity of testing / inspection report & certificate, please contact us at telephone: (86-755) 8307 1443, or email: [CN.Doccheck@sgs.com](mailto:CN.Doccheck@sgs.com)

15/F West of Building 4, Lingyun Industry Park, No. 1177 Lingyun Road, Ningbo National Hi-Tech Zone, Ningbo, Zhejiang, China 315040 t E&E (86-574)89070249  
中国·浙江·宁波市国家高新区凌云路1177号凌云产业园4号楼西1-5层 邮编: 315040 t HL (86-574)89070271 t ML (86-574)89070242 e [sgs.china@sgs.com](mailto:sgs.china@sgs.com)

[www.sgs.com](http://www.sgs.com)